



[Go to Product page](#)

Datasheet for ABIN2786236
anti-SEN5 antibody (Middle Region)

2 Images

Overview

Quantity:	100 µL
Target:	SEN5
Binding Specificity:	Middle Region
Reactivity:	Human, Mouse, Rat, Cow, Dog, Horse, Rabbit, Guinea Pig
Host:	Rabbit
Clonality:	Polyclonal
Conjugate:	This SEN5 antibody is un-conjugated
Application:	Western Blotting (WB)

Product Details

Immunogen:	The immunogen is a synthetic peptide directed towards the middle region of human SEN5
Sequence:	LSGFLDEVKM KYGSLVPLSE KEVLGRLKDV FNEDFSNRKP FINREITNYR
Predicted Reactivity:	Cow: 100%, Dog: 100%, Guinea Pig: 100%, Horse: 100%, Human: 100%, Mouse: 100%, Rabbit: 100%, Rat: 100%
Characteristics:	This is a rabbit polyclonal antibody against SEN5. It was validated on Western Blot using a cell lysate as a positive control.
Purification:	Affinity Purified

Target Details

Target:	SEN5
---------	------

Target Details

Alternative Name:	SENP5 (SENP5 Products)
Background:	<p>The reversible posttranslational modification of proteins by the addition of small ubiquitin-like SUMO proteins (see SUMO1, MIM 601912) is required for numerous biologic processes. SUMO-specific proteases, such as SENP5, are responsible for the initial processing of SUMO precursors to generate a C-terminal diglycine motif required for the conjugation reaction. They also have isopeptidase activity for the removal of SUMO from high molecular mass SUMO conjugates.</p> <p>Alias Symbols: DKFZp56401016, FLJ42398, MGC27076</p> <p>Protein Interaction Partner: RABGAP1, SUMO3, PASK, SUMO2,</p> <p>Protein Size: 755</p>
Molecular Weight:	87 kDa
Gene ID:	205564
NCBI Accession:	NM_152699 , NP_689912
UniProt:	Q96H10

Application Details

Application Notes:	Optimal working dilutions should be determined experimentally by the investigator.
Comment:	Antigen size: 755 AA
Restrictions:	For Research Use only

Handling

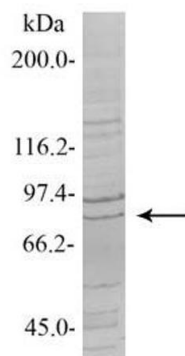
Format:	Liquid
Concentration:	Lot specific
Buffer:	Liquid. Purified antibody supplied in 1x PBS buffer with 0.09 % (w/v) sodium azide and 2 % sucrose.
Preservative:	Sodium azide
Precaution of Use:	This product contains Sodium azide: a POISONOUS AND HAZARDOUS SUBSTANCE which should be handled by trained staff only.
Handling Advice:	Avoid repeated freeze-thaw cycles.
Storage:	-20 °C

Handling

Storage Comment: For short term use, store at 2-8°C up to 1 week. For long term storage, store at -20°C in small aliquots to prevent freeze-thaw cycles.

Images

SENP5



See Immunoblot 2 Data for more information.



Western Blotting

Image 1. Sample Type: 1.Rat Testis cells (200ug)

Primary Dilution: 1:1000

Secondary Antibody: alkaline phosphatase-conjugated anti-rabbit

Secondary Dilution: 1:1000

Image Submitted by: Andreia Carvalho
IBMC-OBF, Portugal .

Western Blotting

Image 2. WB Suggested Anti-SENP5 Antibody Titration:

0.2-1 ug/ml

ELISA Titer: 1:312500

Positive Control: 293T cell lysate