

Datasheet for ABIN2786239
anti-DOK6 antibody (Middle Region)[Go to Product page](#)

2 Images

Overview

Quantity:	100 µL
Target:	DOK6
Binding Specificity:	Middle Region
Reactivity:	Human, Mouse, Rat, Guinea Pig, Horse, Rabbit, Cow, Dog
Host:	Rabbit
Clonality:	Polyclonal
Conjugate:	This DOK6 antibody is un-conjugated
Application:	Western Blotting (WB)

Product Details

Immunogen:	The immunogen is a synthetic peptide directed towards the middle region of human DOK6
Sequence:	IYSLQGHGFG SSKMSRAQTF PSYAPEQSEE AQQPLSRSSS YGFSYSSSLI
Predicted Reactivity:	Cow: 93%, Dog: 93%, Guinea Pig: 86%, Horse: 79%, Human: 100%, Mouse: 100%, Rabbit: 79%, Rat: 100%
Characteristics:	This is a rabbit polyclonal antibody against DOK6. It was validated on Western Blot using a cell lysate as a positive control.
Purification:	Affinity Purified

Target Details

Target:	DOK6
---------	------

Target Details

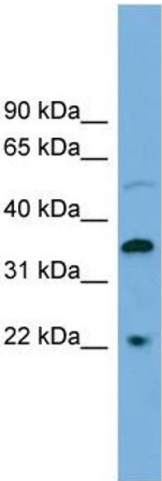
Alternative Name:	DOK6 (DOK6 Products)
Background:	<p>DOK6 is a member of the DOK (see DOK1, MIM 602919) family of intracellular adaptors that play a role in the RET (MIM 164761) signaling cascade (Crowder et al., 2004 [PubMed 15286081]).</p> <p>Alias Symbols: DOK5L, HsT3226, MGC20785</p> <p>Protein Interaction Partner: C1orf94, RBPMS, ERBB2, EGFR, RET,</p> <p>Protein Size: 331</p>
Molecular Weight:	38 kDa
Gene ID:	220164
NCBI Accession:	NM_152721 , NP_689934
UniProt:	Q6PKX4

Application Details

Application Notes:	Optimal working dilutions should be determined experimentally by the investigator.
Comment:	Antigen size: 331 AA
Restrictions:	For Research Use only

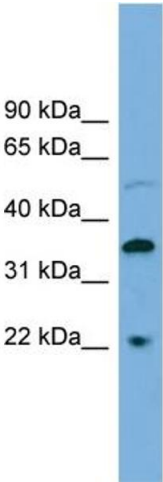
Handling

Format:	Liquid
Concentration:	Lot specific
Buffer:	Liquid. Purified antibody supplied in 1x PBS buffer with 0.09 % (w/v) sodium azide and 2 % sucrose.
Preservative:	Sodium azide
Precaution of Use:	This product contains Sodium azide: a POISONOUS AND HAZARDOUS SUBSTANCE which should be handled by trained staff only.
Handling Advice:	Avoid repeated freeze-thaw cycles.
Storage:	-20 °C
Storage Comment:	For short term use, store at 2-8°C up to 1 week. For long term storage, store at -20°C in small aliquots to prevent freeze-thaw cycles.



Western Blotting

Image 1. WB Suggested Anti-DOK6 Antibody Titration:
0.2-1 ug/ml
ELISA Titer: 1:1562500
Positive Control: COLO205 cell lysate



Rabbit Anti-DOK6 Antibody
Catalog Number: ARP55502
Lot Number: QC25340
Lane: COLO205 Cell Lysate

Antibody Titration: 1.0µg/ml
Gel Concentration: 12%

Western Blotting

Image 2. WB Suggested Anti-DOK6
Antibody Titration: 0.2-1 µg/mL ELISA Titer: 1:1562500
Positive Control: COLO205 cell lysate