

Datasheet for ABIN2786249
anti-SEMA3D antibody (Middle Region)[Go to Product page](#)

1 Image

Overview

Quantity:	100 µL
Target:	SEMA3D
Binding Specificity:	Middle Region
Reactivity:	Human, Mouse, Rat, Pig, Rabbit, Dog, Horse, Cow
Host:	Rabbit
Clonality:	Polyclonal
Conjugate:	This SEMA3D antibody is un-conjugated
Application:	Western Blotting (WB)

Product Details

Immunogen:	The immunogen is a synthetic peptide directed towards the middle region of human SEMA3D
Sequence:	LECIPKSQQA TIKWYIQRSG DEHREELKPD ERIKTEYGL LIRSLQKKDS
Predicted Reactivity:	Cow: 93%, Dog: 100%, Horse: 100%, Human: 100%, Mouse: 100%, Pig: 100%, Rabbit: 100%, Rat: 100%
Characteristics:	This is a rabbit polyclonal antibody against SEMA3D. It was validated on Western Blot using a cell lysate as a positive control.
Purification:	Affinity Purified

Target Details

Target:	SEMA3D
---------	--------

Target Details

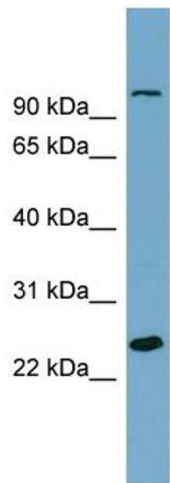
Alternative Name:	SEMA3D (SEMA3D Products)
Background:	SEMA3D induces the collapse and paralysis of neuronal growth cones. SEMA3D could potentially act as repulsive cues toward specific neuronal populations. Alias Symbols: MGC39708, Sema-Z2, coll-2 Protein Size: 777
Molecular Weight:	90 kDa
Gene ID:	223117
NCBI Accession:	NM_152754 , NP_689967
UniProt:	O95025
Pathways:	Regulation of Cell Size

Application Details

Application Notes:	Optimal working dilutions should be determined experimentally by the investigator.
Comment:	Antigen size: 777 AA
Restrictions:	For Research Use only

Handling

Format:	Liquid
Concentration:	Lot specific
Buffer:	Liquid. Purified antibody supplied in 1x PBS buffer with 0.09 % (w/v) sodium azide and 2 % sucrose.
Preservative:	Sodium azide
Precaution of Use:	This product contains Sodium azide: a POISONOUS AND HAZARDOUS SUBSTANCE which should be handled by trained staff only.
Handling Advice:	Avoid repeated freeze-thaw cycles.
Storage:	-20 °C
Storage Comment:	For short term use, store at 2-8°C up to 1 week. For long term storage, store at -20°C in small aliquots to prevent freeze-thaw cycles.



Western Blotting				
Image	1.	WB	Suggested	Anti-SEMA3D Antibody
Titration: 0.2-1 ug/ml				
Positive Control: THP-1 cell lysate				