

Datasheet for ABIN2786257
anti-CCDC110 antibody (Middle Region)



[Go to Product page](#)

1 Image

Overview

Quantity:	100 µL
Target:	CCDC110
Binding Specificity:	Middle Region
Reactivity:	Mouse, Human, Dog, Rabbit, Guinea Pig, Horse, Rat, Cow
Host:	Rabbit
Clonality:	Polyclonal
Conjugate:	This CCDC110 antibody is un-conjugated
Application:	Western Blotting (WB)

Product Details

Immunogen:	The immunogen is a synthetic peptide directed towards the middle region of human CCDC110
Sequence:	KEELKKHSQE NIKFENSISR LTEDKILLEN YVRSIENERD TLEFEMRHLQ
Predicted Reactivity:	Cow: 93%, Dog: 86%, Guinea Pig: 93%, Horse: 92%, Human: 100%, Mouse: 100%, Rabbit: 100%, Rat: 93%
Characteristics:	This is a rabbit polyclonal antibody against CCDC110. It was validated on Western Blot.
Purification:	Affinity Purified

Target Details

Target:	CCDC110
Alternative Name:	CCDC110 (CCDC110 Products)

Target Details

Background: The function of this protein remains unknown.
Alias Symbols: KM-HN-1, KMHN1, MGC33607, CT52
Protein Interaction Partner: DEPTOR, CAND1, CUL3,
Protein Size: 833

Molecular Weight: 97 kDa

Gene ID: 256309

NCBI Accession: [NM_152775](#), [NP_689988](#)

UniProt: [Q8TBZ0](#)

Application Details

Application Notes: Optimal working dilutions should be determined experimentally by the investigator.

Comment: Antigen size: 833 AA

Restrictions: For Research Use only

Handling

Format: Liquid

Concentration: Lot specific

Buffer: Liquid. Purified antibody supplied in 1x PBS buffer with 0.09 % (w/v) sodium azide and 2 % sucrose.

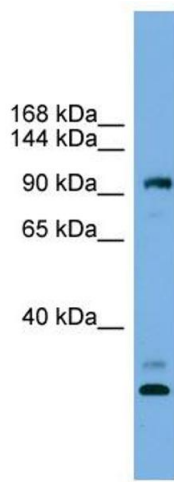
Preservative: Sodium azide

Precaution of Use: This product contains Sodium azide: a POISONOUS AND HAZARDOUS SUBSTANCE which should be handled by trained staff only.

Handling Advice: Avoid repeated freeze-thaw cycles.

Storage: -20 °C

Storage Comment: For short term use, store at 2-8°C up to 1 week. For long term storage, store at -20°C in small aliquots to prevent freeze-thaw cycles.



Western Blotting

Image 1. WB Suggested Anti-CCDC110 Antibody Titration:
0.2-1 ug/ml ELISA Titer: 1:1562500 Positive Control: HeLa cell lysate