



Datasheet for ABIN2786258
anti-LINC00521 antibody (N-Term)



[Go to Product page](#)

2 Images

Overview

Quantity:	100 µL
Target:	LINC00521
Binding Specificity:	N-Term
Reactivity:	Human
Host:	Rabbit
Clonality:	Polyclonal
Conjugate:	This LINC00521 antibody is un-conjugated
Application:	Western Blotting (WB)

Product Details

Immunogen:	The immunogen is a synthetic peptide directed towards the N terminal region of human C14orf48
Sequence:	MDTGQRADPS NPGDKEGDLQ GLWQELYQLQ AKQKCLKREV EKHKLFDYL
Predicted Reactivity:	Human: 100%
Characteristics:	This is a rabbit polyclonal antibody against C14orf48. It was validated on Western Blot.
Purification:	Affinity Purified

Target Details

Target:	LINC00521
Alternative Name:	C14orf48 (LINC00521 Products)

Target Details

Background: The function of C14orf48 remains unknown.
Alias Symbols: DKFZp43401910, MGC33356, c14_5713, C14orf48
Protein Interaction Partner: C1orf216, SKA1,
Protein Size: 140

Molecular Weight: 16 kDa

Gene ID: 256369

NCBI Accession: [NM_152777](#), [NP_689990](#)

Application Details

Application Notes: Optimal working dilutions should be determined experimentally by the investigator.

Comment: Antigen size: 140 AA

Restrictions: For Research Use only

Handling

Format: Liquid

Concentration: Lot specific

Buffer: Liquid. Purified antibody supplied in 1x PBS buffer with 0.09 % (w/v) sodium azide and 2 % sucrose.

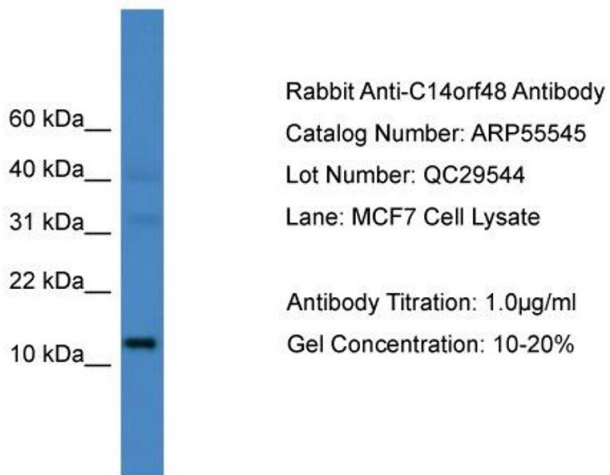
Preservative: Sodium azide

Precaution of Use: This product contains Sodium azide: a POISONOUS AND HAZARDOUS SUBSTANCE which should be handled by trained staff only.

Handling Advice: Avoid repeated freeze-thaw cycles.

Storage: -20 °C

Storage Comment: For short term use, store at 2-8°C up to 1 week. For long term storage, store at -20°C in small aliquots to prevent freeze-thaw cycles.



Western Blotting

Image 1. WB Suggested Anti-C14orf48

Antibody Titration: 0.2-1 µg/mL ELISA Titer: 1:12500

Positive Control: MCF7 cell lysate



Western Blotting

Image 2. WB Suggested Anti-C14orf48 Antibody Titration:

0.2-1 ug/ml

ELISA Titer: 1:12500

Positive Control: MCF7 cell lysate