

Datasheet for ABIN2786259  
**anti-MFSD8 antibody (Middle Region)**[Go to Product page](#)

## 2 Images

## Overview

Quantity:	100 µL
Target:	MFSD8
Binding Specificity:	Middle Region
Reactivity:	Human, Mouse, Rabbit, Rat, Cow, Dog, Guinea Pig, Horse
Host:	Rabbit
Clonality:	Polyclonal
Conjugate:	This MFSD8 antibody is un-conjugated
Application:	Western Blotting (WB)

## Product Details

Immunogen:	The immunogen is a synthetic peptide directed towards the middle region of human MFSD8
Sequence:	FFILLPWGNQ FPKIQWEDLH NNSIPNTTFG EIIIGLWKSP MEDDNERPTG
Predicted Reactivity:	Cow: 93%, Dog: 93%, Guinea Pig: 93%, Horse: 93%, Human: 100%, Mouse: 93%, Rabbit: 100%, Rat: 100%
Characteristics:	This is a rabbit polyclonal antibody against MFSD8. It was validated on Western Blot.
Purification:	Affinity Purified

## Target Details

Target:	MFSD8
Alternative Name:	MFSD8 ( <a href="#">MFSD8 Products</a> )

## Target Details

Background:	<p>This gene encodes a ubiquitous integral membrane protein that contains a transporter domain and a major facilitator superfamily (MFS) domain. Other members of the major facilitator superfamily transport small solutes through chemiosmotic ion gradients. The substrate transported by this protein is unknown. The protein likely localizes to lysosomal membranes. Mutations in this gene are correlated with a variant form of late infantile-onset neuronal ceroid lipofuscinoses (vLINCL).</p> <p>Alias Symbols: CLN7, MGC33302</p> <p>Protein Size: 518</p>
-------------	---

Molecular Weight:	57 kDa
-------------------	--------

Gene ID:	256471
----------	--------

NCBI Accession:	<a href="#">NM_152778</a> , <a href="#">NP_689991</a>
-----------------	---

UniProt:	<a href="#">Q8NHS3</a>
----------	------------------------

## Application Details

Application Notes:	Optimal working dilutions should be determined experimentally by the investigator.
--------------------	--

Comment:	Antigen size: 518 AA
----------	----------------------

Restrictions:	For Research Use only
---------------	-----------------------

## Handling

Format:	Liquid
---------	--------

Concentration:	Lot specific
----------------	--------------

Buffer:	Liquid. Purified antibody supplied in 1x PBS buffer with 0.09 % (w/v) sodium azide and 2 % sucrose.
---------	---

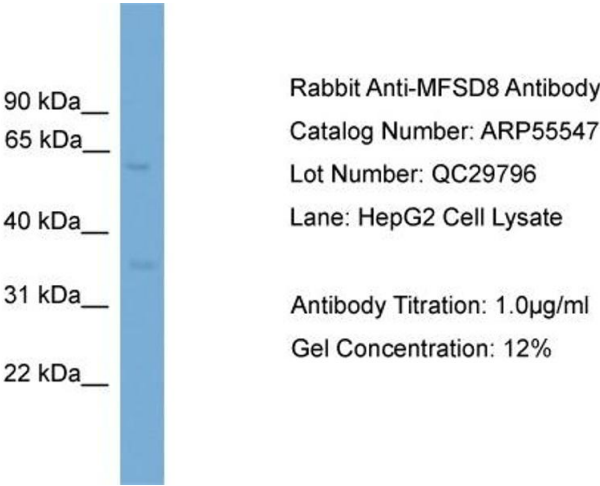
Preservative:	Sodium azide
---------------	--------------

Precaution of Use:	This product contains Sodium azide: a POISONOUS AND HAZARDOUS SUBSTANCE which should be handled by trained staff only.
--------------------	--

Handling Advice:	Avoid repeated freeze-thaw cycles.
------------------	------------------------------------

Storage:	-20 °C
----------	--------

Storage Comment:	For short term use, store at 2-8°C up to 1 week. For long term storage, store at -20°C in small aliquots to prevent freeze-thaw cycles.
------------------	---

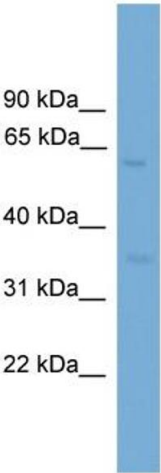


**Western Blotting**

**Image 1.** WB Suggested Anti-MFSD8

Antibody Titration: 0.2-1 µg/mL ELISA Titer: 1::12500

Positive Control: HepG2 cell lysate



**Western Blotting**

**Image 2. WB Suggested Anti-MFSD8 Antibody Titration:**

0.2-1 ug/ml

**ELISA Titer:** 1:312500

**Positive Control:** HepG2 cell lysate