

Datasheet for ABIN2786261  
**anti-TMEM146 antibody (N-Term)**[Go to Product page](#)

## 1 Image

## Overview

Quantity:	100 µL
Target:	TMEM146
Binding Specificity:	N-Term
Reactivity:	Human
Host:	Rabbit
Clonality:	Polyclonal
Conjugate:	This TMEM146 antibody is un-conjugated
Application:	Western Blotting (WB)

## Product Details

Immunogen:	The immunogen is a synthetic peptide directed towards the N terminal region of human TMEM146
Sequence:	LIQDVQGDRL YFHPTTTRLI KHPCEKNIAL YLGKQVFFTM DNFETSLLPF
Predicted Reactivity:	Human: 100%
Characteristics:	This is a rabbit polyclonal antibody against TMEM146. It was validated on Western Blot using a cell lysate as a positive control.
Purification:	Affinity Purified

## Target Details

Target:	TMEM146
---------	---------

## Target Details

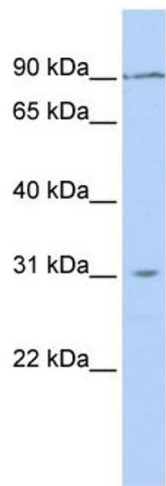
Alternative Name:	TMEM146 ( <a href="#">TMEM146 Products</a> )
Background:	<p>TMEM146 is a single-pass type I membrane protein. The functions of TMEM146 remain unknown.</p> <p>Alias Symbols: MGC39581, TMEM146</p> <p>Protein Interaction Partner: LNX1,</p> <p>Protein Size: 798</p>
Molecular Weight:	90 kDa
Gene ID:	257062
NCBI Accession:	<a href="#">NM_152784</a> , <a href="#">NP_689997</a>
UniProt:	<a href="#">Q86XM0</a>

## Application Details

Application Notes:	Optimal working dilutions should be determined experimentally by the investigator.
Comment:	Antigen size: 798 AA
Restrictions:	For Research Use only

## Handling

Format:	Liquid
Concentration:	Lot specific
Buffer:	Liquid. Purified antibody supplied in 1x PBS buffer with 0.09 % (w/v) sodium azide and 2 % sucrose.
Preservative:	Sodium azide
Precaution of Use:	This product contains Sodium azide: a POISONOUS AND HAZARDOUS SUBSTANCE which should be handled by trained staff only.
Handling Advice:	Avoid repeated freeze-thaw cycles.
Storage:	-20 °C
Storage Comment:	For short term use, store at 2-8°C up to 1 week. For long term storage, store at -20°C in small aliquots to prevent freeze-thaw cycles.



Western Blotting			
Image	1.	WB	Suggested Anti-TMEM146 Antibody
Titration: 0.2-1 ug/ml			
ELISA Titer: 1:1562500			
Positive Control: Jurkat cell lysate			