

Datasheet for ABIN2786272
anti-LRRC57 antibody (N-Term)[Go to Product page](#)

1 Image

1 Publication

Overview

Quantity:	100 µL
Target:	LRRC57
Binding Specificity:	N-Term
Reactivity:	Human, Mouse, Rat, Dog, Guinea Pig, Horse, Cow, Rabbit, Zebrafish (Danio rerio), Saccharomyces cerevisiae
Host:	Rabbit
Clonality:	Polyclonal
Conjugate:	This LRRC57 antibody is un-conjugated
Application:	Western Blotting (WB)

Product Details

Immunogen:	The immunogen is a synthetic peptide directed towards the N terminal region of human LRRC57
Sequence:	MGNSALRAHV ETAQKTGVFQ LKDRGLTEFP ADLQKLTSNL RTIDLSNNKI
Predicted Reactivity:	Cow: 100%, Dog: 100%, Guinea Pig: 100%, Horse: 100%, Human: 100%, Mouse: 100%, Rabbit: 100%, Rat: 100%, Yeast: 85%, Zebrafish: 86%
Characteristics:	This is a rabbit polyclonal antibody against LRRC57. It was validated on Western Blot using a cell lysate as a positive control.
Purification:	Affinity Purified

Target Details

Target:	LRRC57
Alternative Name:	LRRC57 (LRRC57 Products)
Background:	<p>The exact function of LRRC57 remains unknown.</p> <p>Alias Symbols: DKFZp686H1865, FLJ36812</p> <p>Protein Interaction Partner: UBC, COL7A1,</p> <p>Protein Size: 239</p>
Molecular Weight:	27 kDa
Gene ID:	255252
NCBI Accession:	NM_153260 , NP_694992
UniProt:	Q8N9N7

Application Details

Application Notes:	Optimal working dilutions should be determined experimentally by the investigator.
Comment:	Antigen size: 239 AA
Restrictions:	For Research Use only

Handling

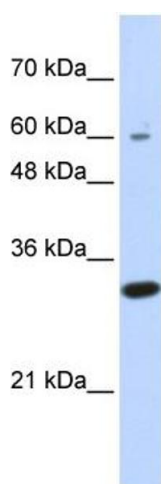
Format:	Liquid
Concentration:	Lot specific
Buffer:	Liquid. Purified antibody supplied in 1x PBS buffer with 0.09 % (w/v) sodium azide and 2 % sucrose.
Preservative:	Sodium azide
Precaution of Use:	This product contains Sodium azide: a POISONOUS AND HAZARDOUS SUBSTANCE which should be handled by trained staff only.
Handling Advice:	Avoid repeated freeze-thaw cycles.
Storage:	-20 °C
Storage Comment:	For short term use, store at 2-8°C up to 1 week. For long term storage, store at -20°C in small aliquots to prevent freeze-thaw cycles.

Publications

Product cited in: Schauer, Freund, Prenni, Curthoys: "Proteomic profiling and pathway analysis of the response of rat renal proximal convoluted tubules to metabolic acidosis." in: **American journal of physiology. Renal physiology**, Vol. 305, Issue 5, pp. F628-40, (2013) ([PubMed](#)).

Freund, Prenni, Curthoys: "Response of the mitochondrial proteome of rat renal proximal convoluted tubules to chronic metabolic acidosis." in: **American journal of physiology. Renal physiology**, Vol. 304, Issue 2, pp. F145-55, (2013) ([PubMed](#)).

Images



Western Blotting

Image 1. WB Suggested Anti-LRRC57 Antibody Titration:

0.2-1 ug/ml

ELISA Titer: 1:62500

Positive Control: Transfected 293T