

Datasheet for ABIN2786284

anti-NAP1L5 antibody (Middle Region)[Go to Product page](#)**1** Image

Overview

Quantity:	100 µL
Target:	NAP1L5
Binding Specificity:	Middle Region
Reactivity:	Human, Mouse, Rat, Cow, Horse, Dog, Pig
Host:	Rabbit
Clonality:	Polyclonal
Conjugate:	This NAP1L5 antibody is un-conjugated
Application:	Western Blotting (WB)

Product Details

Sequence:	GDSAAAPAAE EPQAPAENAP KPKKDFMESL PNSVKCRVLA LKKLQKRCDK
Predicted Reactivity:	Cow: 100%, Dog: 93%, Horse: 100%, Human: 100%, Mouse: 93%, Pig: 92%, Rat: 93%
Characteristics:	This is a rabbit polyclonal antibody against Nap1l5. It was validated on Western Blot.
Purification:	Affinity Purified

Target Details

Target:	NAP1L5
Alternative Name:	Nap1l5 (NAP1L5 Products)
Background:	The function of this protein remains unknown. Alias Symbols: 1110020M21Rik

Target Details

	Protein Interaction Partner: Nap1I2, Protein Size: 156
Molecular Weight:	17 kDa
Gene ID:	58243
NCBI Accession:	NM_021432 , NP_067407
UniProt:	Q9JJF0

Application Details

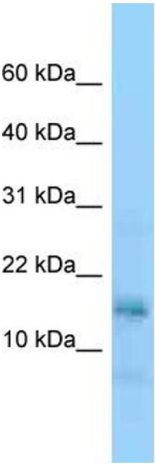
Application Notes:	Optimal working dilutions should be determined experimentally by the investigator.
Comment:	Antigen size: 156 AA
Restrictions:	For Research Use only

Handling

Format:	Liquid
Concentration:	Lot specific
Buffer:	Liquid. Purified antibody supplied in 1x PBS buffer with 0.09 % (w/v) sodium azide and 2 % sucrose.
Preservative:	Sodium azide
Precaution of Use:	This product contains Sodium azide: a POISONOUS AND HAZARDOUS SUBSTANCE which should be handled by trained staff only.
Handling Advice:	Avoid repeated freeze-thaw cycles.
Storage:	-20 °C
Storage Comment:	For short term use, store at 2-8°C up to 1 week. For long term storage, store at -20°C in small aliquots to prevent freeze-thaw cycles.

Western Blotting

Image 1.



Rabbit Anti-Nap115 Antibody
Catalog Number: ARP55609
Lot Number: QC25622
Lane: Mouse Small Intestine Lysate

Antibody Titration: 1.0µg/ml
Gel Concentration: 10-20%