

Datasheet for ABIN2786303
anti-C22ORF30 antibody (Middle Region)[Go to Product page](#)

1 Image

Overview

Quantity:	100 µL
Target:	C22ORF30 (C22orf30)
Binding Specificity:	Middle Region
Reactivity:	Human, Mouse, Guinea Pig, Horse, Rabbit, Cow, Dog, Rat, Saccharomyces cerevisiae
Host:	Rabbit
Clonality:	Polyclonal
Conjugate:	This C22ORF30 antibody is un-conjugated
Application:	Western Blotting (WB)

Product Details

Immunogen:	The immunogen is a synthetic peptide directed towards the middle region of human C22orf30
Sequence:	DELDGVKAAC PCPQSSPPEQ KEAEPEKRPK KVSQIRIRKT IPRPDNLTP
Predicted Reactivity:	Cow: 93%, Dog: 93%, Guinea Pig: 100%, Horse: 100%, Human: 100%, Mouse: 100%, Rabbit: 100%, Rat: 100%, Yeast: 80%
Characteristics:	This is a rabbit polyclonal antibody against C22orf30. It was validated on Western Blot using a cell lysate as a positive control.
Purification:	Affinity Purified

Target Details

Target:	C22ORF30 (C22orf30)
---------	---------------------

Target Details

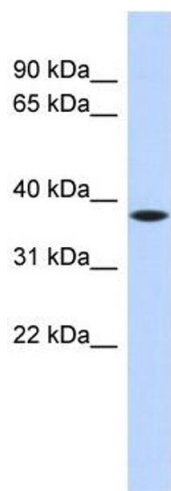
Alternative Name:	C22orf30 (C22orf30 Products)
Background:	<p>The specific function of C22orf30 is not yet known.</p> <p>Alias Symbols: DKFZp781P2328, FLJ23059, MGC50372, C22orf30, RP4-694E4.2</p> <p>Protein Interaction Partner: UBC, PASK, HSP90AA1, PPP2R1A, PPP2CB, PPP2CA,</p> <p>Protein Size: 302</p>
Molecular Weight:	34 kDa
Gene ID:	253143
NCBI Accession:	NM_173566 , NP_775837
UniProt:	Q5THK1

Application Details

Application Notes:	Optimal working dilutions should be determined experimentally by the investigator.
Comment:	Antigen size: 302 AA
Restrictions:	For Research Use only

Handling

Format:	Liquid
Concentration:	Lot specific
Buffer:	Liquid. Purified antibody supplied in 1x PBS buffer with 0.09 % (w/v) sodium azide and 2 % sucrose.
Preservative:	Sodium azide
Precaution of Use:	This product contains Sodium azide: a POISONOUS AND HAZARDOUS SUBSTANCE which should be handled by trained staff only.
Handling Advice:	Avoid repeated freeze-thaw cycles.
Storage:	-20 °C
Storage Comment:	For short term use, store at 2-8°C up to 1 week. For long term storage, store at -20°C in small aliquots to prevent freeze-thaw cycles.



Western Blotting				
Image	1.	WB	Suggested	Anti-C22orf30 Antibody
Titration: 0.2-1 ug/ml				
ELISA Titer: 1:1562500				
Positive Control: Hela cell lysate				