



[Go to Product page](#)

Datasheet for ABIN2786305

## anti-EPHX4 antibody (C-Term)

### 1 Image

#### Overview

Quantity:	100 µL
Target:	EPHX4
Binding Specificity:	C-Term
Reactivity:	Human, Mouse, Rat, Cow, Dog, Guinea Pig, Rabbit, Horse
Host:	Rabbit
Clonality:	Polyclonal
Conjugate:	This EPHX4 antibody is un-conjugated
Application:	Western Blotting (WB)

#### Product Details

Immunogen:	The immunogen is a synthetic peptide directed towards the C-terminal region of Human EPHX4
Sequence:	QLTTEDLEAY IYVFSQPGAL SGPINHYRNI FSCLPLKHHM VTTPTELLWG
Predicted Reactivity:	Cow: 100%, Dog: 100%, Guinea Pig: 100%, Horse: 100%, Human: 100%, Mouse: 100%, Rabbit: 100%, Rat: 100%
Characteristics:	This is a rabbit polyclonal antibody against EPHX4. It was validated on Western Blot.
Purification:	Affinity Purified

#### Target Details

Target:	EPHX4
Alternative Name:	EPHX4 ( <a href="#">EPHX4 Products</a> )

## Target Details

---

Background: The function of this protein remains unknown.  
Alias Symbols: ABHD7, EPHXRP  
Protein Size: 362

---

Molecular Weight: 39 kDa

---

Gene ID: 253152

---

NCBI Accession: [NM\\_173567](#), [NP\\_775838](#)

---

UniProt: [Q8IUS5](#)

---

## Application Details

---

Restrictions: For Research Use only

---

## Handling

---

Format: Liquid

---

Concentration: 1 mg/mL

---

Buffer: Liquid. Purified antibody supplied in 1x PBS buffer with 0.09 % (w/v) sodium azide and 2 % sucrose.

---

Preservative: Sodium azide

---

Precaution of Use: This product contains Sodium azide: a POISONOUS AND HAZARDOUS SUBSTANCE which should be handled by trained staff only.

---

Handling Advice: Avoid repeat freeze-thaw cycles.

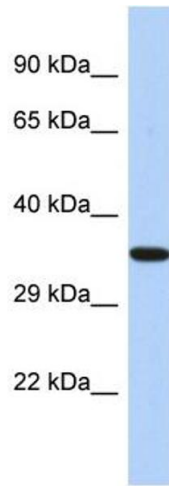
---

Storage: -20 °C

---

Storage Comment: For short term use, store at 2-8°C up to 1 week. For long term storage, store at -20°C in small aliquots to prevent freeze-thaw cycles.

---



### Western Blotting

Image 1.