



[Go to Product page](#)

Datasheet for ABIN2786308

anti-C14ORF80 antibody (N-Term)

1 Image

Overview

Quantity:	100 µL
Target:	C14ORF80
Binding Specificity:	N-Term
Reactivity:	Human, Cow, Guinea Pig, Horse, Rat
Host:	Rabbit
Clonality:	Polyclonal
Conjugate:	This C14ORF80 antibody is un-conjugated
Application:	Western Blotting (WB)

Product Details

Immunogen:	The immunogen is a synthetic peptide directed towards the n terminal region of human C14orf80
Sequence:	MLAQARVPLG DEMTVCQIHL YTRGCHSDQS LSHLSVTEAE MLRDPEGGQQ
Predicted Reactivity:	Cow: 79%, Guinea Pig: 79%, Horse: 86%, Human: 100%, Rat: 79%
Characteristics:	This is a rabbit polyclonal antibody against C14orf80. It was validated on Western Blot using a cell lysate as a positive control.
Purification:	Affinity Purified

Target Details

Target:	C14ORF80
---------	----------

Target Details

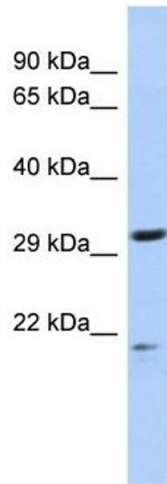
Alternative Name:	C14orf80 (C14ORF80 Products)
Background:	The specific function of C14orf80 is not yet known. Protein Interaction Partner: DDIT3, FKBP5, UBC, Protein Size: 248
Molecular Weight:	28 kDa
Gene ID:	283643
NCBI Accession:	NM_001134875
UniProt:	Q86SX3

Application Details

Application Notes:	Optimal working dilutions should be determined experimentally by the investigator.
Comment:	Antigen size: 248 AA
Restrictions:	For Research Use only

Handling

Format:	Liquid
Concentration:	Lot specific
Buffer:	Liquid. Purified antibody supplied in 1x PBS buffer with 0.09 % (w/v) sodium azide and 2 % sucrose.
Preservative:	Sodium azide
Precaution of Use:	This product contains Sodium azide: a POISONOUS AND HAZARDOUS SUBSTANCE which should be handled by trained staff only.
Handling Advice:	Avoid repeated freeze-thaw cycles.
Storage:	-20 °C
Storage Comment:	For short term use, store at 2-8°C up to 1 week. For long term storage, store at -20°C in small aliquots to prevent freeze-thaw cycles.



Western Blotting

Image 1. WB Suggested Anti-C14orf80 Antibody

Titration: 0.2-1 ug/ml

ELISA Titer: 1:1562500

Positive Control: Jurkat cell lysate