

Datasheet for ABIN2786325
anti-NEGR1 antibody (N-Term)[Go to Product page](#)

2 Images

Overview

Quantity:	100 µL
Target:	NEGR1
Binding Specificity:	N-Term
Reactivity:	Human, Mouse, Rat, Guinea Pig, Horse, Rabbit, Dog
Host:	Rabbit
Clonality:	Polyclonal
Conjugate:	This NEGR1 antibody is un-conjugated
Application:	Western Blotting (WB)

Product Details

Immunogen:	The immunogen is a synthetic peptide directed towards the N terminal region of human NEGR1
Sequence:	WLNRRSSIIFA GGDKWSVDPR VSISTLNKRD YSLQIQNV DV TDDGPYTCSV
Predicted Reactivity:	Dog: 100%, Guinea Pig: 100%, Horse: 100%, Human: 100%, Mouse: 100%, Rabbit: 100%, Rat: 100%
Characteristics:	This is a rabbit polyclonal antibody against NEGR1. It was validated on Western Blot.
Purification:	Affinity Purified

Target Details

Target:	NEGR1
Alternative Name:	NEGR1 (NEGR1 Products)

Target Details

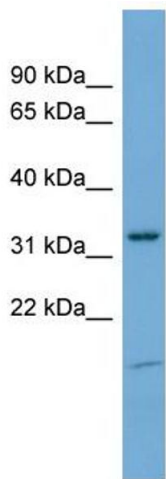
Background:	NEGR1 may be involved in cell-adhesion. NEGR1 may function as a trans-neural growth-promoting factor in regenerative axon sprouting in the mammalian brain. Alias Symbols: DMML2433, IGLON4, KILON, MGC46680, Ntra Protein Interaction Partner: NEGR1, NTM, LSAMP, Htt, Protein Size: 354
Molecular Weight:	39 kDa
Gene ID:	257194
NCBI Accession:	NM_173808 , NP_776169
UniProt:	Q7Z3B1
Pathways:	Feeding Behaviour

Application Details

Application Notes:	Optimal working dilutions should be determined experimentally by the investigator.
Comment:	Antigen size: 354 AA
Restrictions:	For Research Use only

Handling

Format:	Liquid
Concentration:	Lot specific
Buffer:	Liquid. Purified antibody supplied in 1x PBS buffer with 0.09 % (w/v) sodium azide and 2 % sucrose.
Preservative:	Sodium azide
Precaution of Use:	This product contains Sodium azide: a POISONOUS AND HAZARDOUS SUBSTANCE which should be handled by trained staff only.
Handling Advice:	Avoid repeated freeze-thaw cycles.
Storage:	-20 °C
Storage Comment:	For short term use, store at 2-8°C up to 1 week. For long term storage, store at -20°C in small aliquots to prevent freeze-thaw cycles.



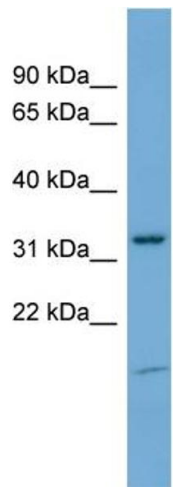
Western Blotting

Image 1. WB Suggested Anti-NEGR1 Antibody Titration:

0.2-1 ug/ml

ELISA Titer: 1:62500

Positive Control: HepG2 cell lysate



Rabbit Anti-NEGR1 Antibody
Catalog Number: ARP55701
Lot Number: QC29546
Lane: HepG2 Cell Lysate

Antibody Titration: 1.0µg/ml
Gel Concentration: 12%

Western Blotting

Image 2. WB Suggested Anti-NEGR1

Antibody Titration: 0.2-1 µg/mL ELISA Titer: 1::2500

Positive Control: HepG2 cell lysate