

Datasheet for ABIN2786327
anti-HARBI1 antibody (N-Term)[Go to Product page](#)

1 Image

Overview

Quantity:	100 µL
Target:	HARBI1
Binding Specificity:	N-Term
Reactivity:	Mouse, Human, Rat, Cow, Dog, Guinea Pig, Horse, Rabbit
Host:	Rabbit
Clonality:	Polyclonal
Conjugate:	This HARBI1 antibody is un-conjugated
Application:	Western Blotting (WB)

Product Details

Immunogen:	The immunogen is a synthetic peptide corresponding to a region of Mouse
Sequence:	ITVLDCDLLL YGRGHRTLDR FKLDDVTDEY LMSMYGFPRQ FIYFLVELLG
Predicted Reactivity:	Cow: 100%, Dog: 100%, Guinea Pig: 100%, Horse: 100%, Human: 100%, Mouse: 100%, Rabbit: 100%, Rat: 100%
Characteristics:	This is a rabbit polyclonal antibody against Harbi1. It was validated on Western Blot.
Purification:	Affinity Purified

Target Details

Target:	HARBI1
Alternative Name:	Harbi1 (HARBI1 Products)

Target Details

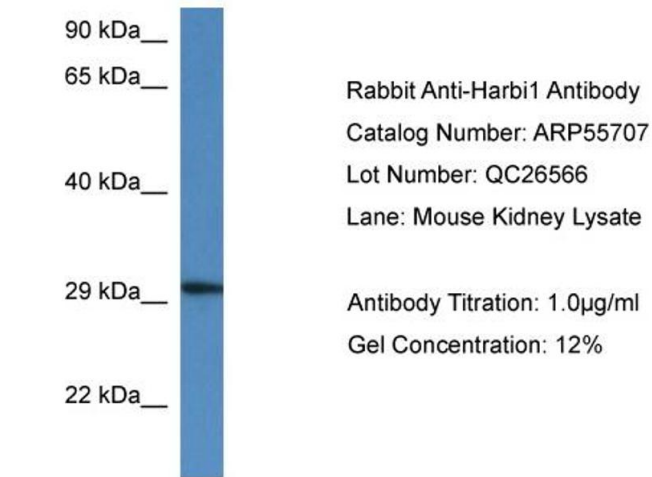
Background:	The function of this protein remains unknown. Alias Symbols: D230010M03Rik, RP23-12H6.3 Protein Size: 246
Molecular Weight:	27 kDa
Gene ID:	241547
NCBI Accession:	NM_178724 , NP_848839
UniProt:	Q8BR93

Application Details

Application Notes:	Optimal working dilutions should be determined experimentally by the investigator.
Comment:	Antigen size: 246 AA
Restrictions:	For Research Use only

Handling

Format:	Liquid
Concentration:	Lot specific
Buffer:	Liquid. Purified antibody supplied in 1x PBS buffer with 0.09 % (w/v) sodium azide and 2 % sucrose.
Preservative:	Sodium azide
Precaution of Use:	This product contains Sodium azide: a POISONOUS AND HAZARDOUS SUBSTANCE which should be handled by trained staff only.
Handling Advice:	Avoid repeated freeze-thaw cycles.
Storage:	-20 °C
Storage Comment:	For short term use, store at 2-8°C up to 1 week. For long term storage, store at -20°C in small aliquots to prevent freeze-thaw cycles.



Rabbit Anti-Harbi1 Antibody
Catalog Number: ARP55707
Lot Number: QC26566
Lane: Mouse Kidney Lysate

Antibody Titration: 1.0µg/ml
Gel Concentration: 12%

Western Blotting

Image 1.