

Datasheet for ABIN2786328  
**anti-HARBI1 antibody (Middle Region)**[Go to Product page](#)

## 1 Image

## Overview

Quantity:	100 µL
Target:	HARBI1
Binding Specificity:	Middle Region
Reactivity:	Mouse, Human, Rat, Cow, Dog, Guinea Pig, Horse, Rabbit, Zebrafish (Danio rerio)
Host:	Rabbit
Clonality:	Polyclonal
Conjugate:	This HARBI1 antibody is un-conjugated
Application:	Western Blotting (WB)

## Product Details

Immunogen:	The immunogen is a synthetic peptide directed towards the middle region of human C11orf77
Sequence:	GVMGVVDCIH VAIKAPNAED LSYVNRKGLH SLNCLMVCDI RGTLMTVETN
Predicted Reactivity:	Cow: 100%, Dog: 100%, Guinea Pig: 100%, Horse: 100%, Human: 100%, Mouse: 100%, Rabbit: 100%, Rat: 100%, Zebrafish: 79%
Characteristics:	This is a rabbit polyclonal antibody against C11orf77. It was validated on Western Blot using a cell lysate as a positive control.
Purification:	Affinity Purified

## Target Details

Target:	HARBI1
---------	--------

## Target Details

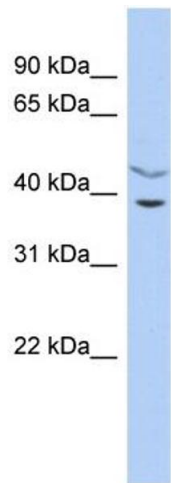
Alternative Name:	C11orf77 ( <a href="#">HARBI1 Products</a> )
Background:	The specific function of the protein remains unknown. Alias Symbols: FLJ32675, C11orf77 Protein Size: 349
Molecular Weight:	39 kDa
Gene ID:	283254
NCBI Accession:	<a href="#">NM_173811</a> , <a href="#">NP_776172</a>
UniProt:	<a href="#">Q96MB7</a>

## Application Details

Application Notes:	Optimal working dilutions should be determined experimentally by the investigator.
Comment:	Antigen size: 349 AA
Restrictions:	For Research Use only

## Handling

Format:	Liquid
Concentration:	Lot specific
Buffer:	Liquid. Purified antibody supplied in 1x PBS buffer with 0.09 % (w/v) sodium azide and 2 % sucrose.
Preservative:	Sodium azide
Precaution of Use:	This product contains Sodium azide: a POISONOUS AND HAZARDOUS SUBSTANCE which should be handled by trained staff only.
Handling Advice:	Avoid repeated freeze-thaw cycles.
Storage:	-20 °C
Storage Comment:	For short term use, store at 2-8°C up to 1 week. For long term storage, store at -20°C in small aliquots to prevent freeze-thaw cycles.



Western Blotting				
Image	1.	WB	Suggested	Anti-C11orf77 Antibody
Titration: 0.2-1 ug/ml				
ELISA Titer: 1:1562500				
Positive Control: THP-1 cell lysate				