

Datasheet for ABIN2786340  
**anti-RASGEF1C antibody (N-Term)**[Go to Product page](#)

## 1 Image

## Overview

Quantity:	100 µL
Target:	RASGEF1C
Binding Specificity:	N-Term
Reactivity:	Human, Mouse, Rat, Cow, Horse, Rabbit, Pig
Host:	Rabbit
Clonality:	Polyclonal
Conjugate:	This RASGEF1C antibody is un-conjugated
Application:	Western Blotting (WB)

## Product Details

Immunogen:	The immunogen is a synthetic peptide directed towards the N terminal region of human RASGEF1C
Sequence:	MPQTLSASDM VTPGSLSPPP TEPTDGEQAG QPLLDGAPSS ASLETLIQHL
Predicted Reactivity:	Cow: 86%, Horse: 100%, Human: 100%, Mouse: 100%, Pig: 93%, Rabbit: 93%, Rat: 100%
Characteristics:	This is a rabbit polyclonal antibody against RASGEF1C. It was validated on Western Blot using a cell lysate as a positive control.
Purification:	Affinity Purified

## Target Details

Target:	RASGEF1C
---------	----------

## Target Details

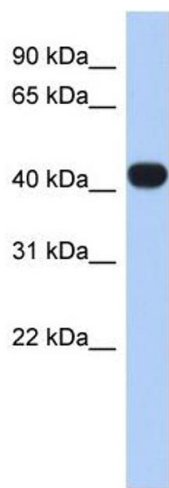
Alternative Name:	RASGEF1C ( <a href="#">RASGEF1C Products</a> )
Background:	<p>RASGEF1C is a guanine nucleotide exchange factor (GEF).</p> <p>Alias Symbols: FLJ35841</p> <p>Protein Interaction Partner: POT1, TERF2, TERF1, TNK2,</p> <p>Protein Size: 466</p>
Molecular Weight:	53 kDa
Gene ID:	255426
NCBI Accession:	<a href="#">NM_175062</a> , <a href="#">NP_778232</a>
UniProt:	<a href="#">Q8N431</a>

## Application Details

Application Notes:	Optimal working dilutions should be determined experimentally by the investigator.
Comment:	Antigen size: 466 AA
Restrictions:	For Research Use only

## Handling

Format:	Liquid
Concentration:	Lot specific
Buffer:	Liquid. Purified antibody supplied in 1x PBS buffer with 0.09 % (w/v) sodium azide and 2 % sucrose.
Preservative:	Sodium azide
Precaution of Use:	This product contains Sodium azide: a POISONOUS AND HAZARDOUS SUBSTANCE which should be handled by trained staff only.
Handling Advice:	Avoid repeated freeze-thaw cycles.
Storage:	-20 °C
Storage Comment:	For short term use, store at 2-8°C up to 1 week. For long term storage, store at -20°C in small aliquots to prevent freeze-thaw cycles.



Western Blotting			
Image	1.	WB	Suggested Anti-RASGEF1C Antibody
Titration: 0.2-1 ug/ml			
ELISA Titer: 1:1562500			
Positive Control: Human heart			