

Datasheet for ABIN2786343
anti-RAB37 antibody (Middle Region)[Go to Product page](#)

3 Images

Overview

Quantity:	100 µL
Target:	RAB37
Binding Specificity:	Middle Region
Reactivity:	Human, Rat, Mouse, Dog, Guinea Pig, Horse, Cow, Rabbit, Pig
Host:	Rabbit
Clonality:	Polyclonal
Conjugate:	This RAB37 antibody is un-conjugated
Application:	Western Blotting (WB)

Product Details

Immunogen:	The immunogen is a synthetic peptide directed towards the middle region of human RAB37
Sequence:	SAKTGMNVEL AFLAIKELK YRAGHQADEP SFQIRDYVES QKKRSSCCSF
Predicted Reactivity:	Cow: 93%, Dog: 79%, Guinea Pig: 86%, Horse: 100%, Human: 100%, Mouse: 100%, Pig: 100%, Rabbit: 86%, Rat: 100%
Characteristics:	This is a rabbit polyclonal antibody against RAB37. It was validated on Western Blot.
Purification:	Affinity Purified

Target Details

Target:	RAB37
Alternative Name:	RAB37 (RAB37 Products)

Target Details

Background: Rab proteins are low molecular mass GTPases that are critical regulators of vesicle trafficking. For additional background information on Rab proteins, see MIM 179508.

Alias Symbols: FLJ30284, FLJ32507

Protein Interaction Partner: MAL2, RABGGTB, UBC, RIMS1, RAB5A, EWSR1,

Protein Size: 216

Molecular Weight: 24 kDa

Gene ID: 326624

NCBI Accession: [NM_175738](#), [NP_783865](#)

UniProt: [Q8IWA7](#)

Application Details

Application Notes: Optimal working dilutions should be determined experimentally by the investigator.

Comment: Antigen size: 216 AA

Restrictions: For Research Use only

Handling

Format: Liquid

Concentration: Lot specific

Buffer: Liquid. Purified antibody supplied in 1x PBS buffer with 0.09 % (w/v) sodium azide and 2 % sucrose.

Preservative: Sodium azide

Precaution of Use: This product contains Sodium azide: a POISONOUS AND HAZARDOUS SUBSTANCE which should be handled by trained staff only.

Handling Advice: Avoid repeated freeze-thaw cycles.

Storage: -20 °C

Storage Comment: For short term use, store at 2-8°C up to 1 week. For long term storage, store at -20°C in small aliquots to prevent freeze-thaw cycles.

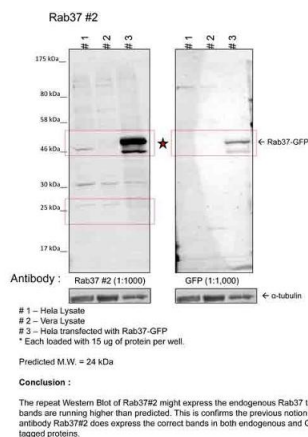
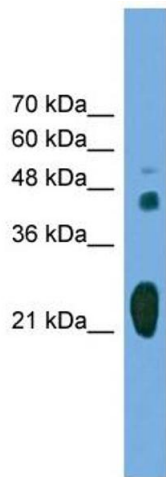


Image submitted by Dr. Jakob Szwedo from Dr. Lupashin's lab at The University of Arkansas

Western Blotting

Image 1. WB Suggested Anti-RAB37 Antibody Titration:

0.2-1 ug/ml

Positive Control: Transfected 293T

Western Blotting

Image 2. Sample Type: 1. Human Cervical Cancer Cell Lysate (15ug)

2. Monkey Fibroblast Cell Lysate (15ug)

Primary Dilution: 1:1000

Secondary Antibody: goat anti-Rabbit

Secondary Dilution: 1:40,000

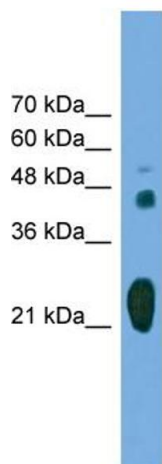
Image Submitted by: Dr. Jakob Szwedo, Dr. Lupashin's Lab
University of Arkansas for Medical Sciences.

Western Blotting

Image 3. WB Suggested Anti-RAB37

Antibody Titration: 0.2-1 µg/mL

Positive Control: Transfected 293T



Rabbit Anti-RAB37 Antibody
Catalog Number: ARP55739
Lot Number: QC26596
Lane: Transfected 293T Cell Lysate

Antibody Titration: 1.0µg/ml
Gel Concentration: 12%