

Datasheet for ABIN2786359  
**anti-C1ORF110 antibody (N-Term)**



[Go to Product page](#)

1 Image

## Overview

Quantity:	100 µL
Target:	C1ORF110
Binding Specificity:	N-Term
Reactivity:	Human, Mouse, Rat, Pig, Cow, Dog, Horse, Rabbit, Guinea Pig
Host:	Rabbit
Clonality:	Polyclonal
Conjugate:	This C1ORF110 antibody is un-conjugated
Application:	Western Blotting (WB)

## Product Details

Immunogen:	The immunogen is a synthetic peptide directed towards the N terminal region of human C1orf110
Sequence:	LKVICLYHVK LLTWEQRQLQ KELQRLQQAETMKKKFSSYL GNGFQKRPED
Predicted Reactivity:	Cow: 100%, Dog: 100%, Guinea Pig: 93%, Horse: 100%, Human: 100%, Mouse: 100%, Pig: 100%, Rabbit: 100%, Rat: 93%
Characteristics:	This is a rabbit polyclonal antibody against C1orf110. It was validated on Western Blot using a cell lysate as a positive control.
Purification:	Affinity Purified

## Target Details

Target:	C1ORF110
---------	----------

## Target Details

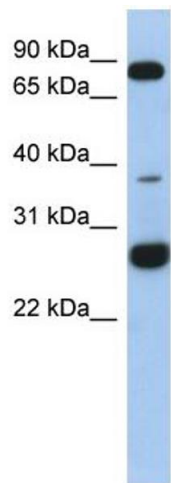
Alternative Name:	C1orf110 ( <a href="#">C1ORF110 Products</a> )
Background:	The exact functions of C1orf110 remain unknown. Alias Symbols: FLJ41579, MGC48998, RP11-331H2.2 Protein Interaction Partner: UBC, APP, Protein Size: 302
Molecular Weight:	34 kDa
Gene ID:	339512
NCBI Accession:	<a href="#">NM_178550</a> , <a href="#">NP_848645</a>
UniProt:	<a href="#">Q86UF4</a>

## Application Details

Application Notes:	Optimal working dilutions should be determined experimentally by the investigator.
Comment:	Antigen size: 302 AA
Restrictions:	For Research Use only

## Handling

Format:	Liquid
Concentration:	Lot specific
Buffer:	Liquid. Purified antibody supplied in 1x PBS buffer with 0.09 % (w/v) sodium azide and 2 % sucrose.
Preservative:	Sodium azide
Precaution of Use:	This product contains Sodium azide: a POISONOUS AND HAZARDOUS SUBSTANCE which should be handled by trained staff only.
Handling Advice:	Avoid repeated freeze-thaw cycles.
Storage:	-20 °C
Storage Comment:	For short term use, store at 2-8°C up to 1 week. For long term storage, store at -20°C in small aliquots to prevent freeze-thaw cycles.



Western Blotting				
Image	1.	WB	Suggested	Anti-C1orf110 Antibody
Titration: 0.2-1 ug/ml				
ELISA Titer: 1:1562500				
Positive Control: Human heart				