



[Go to Product page](#)

Datasheet for ABIN2786388
anti-BRICD5 antibody (N-Term)

1 Image

Overview

Quantity:	100 µL
Target:	BRICD5
Binding Specificity:	N-Term
Reactivity:	Human
Host:	Rabbit
Clonality:	Polyclonal
Conjugate:	This BRICD5 antibody is un-conjugated
Application:	Western Blotting (WB)

Product Details

Immunogen:	The immunogen is a synthetic peptide directed towards the N-terminal region of HUMAN BRICD5
Sequence:	CCAERP KPGP TG VTKP SCG GWRAV SLLLL LLLL VLA AVG VVAGGL LGSA
Predicted Reactivity:	Human: 100%
Characteristics:	This is a rabbit polyclonal antibody against BRICD5. It was validated on Western Blot.
Purification:	Affinity Purified

Target Details

Target:	BRICD5
Alternative Name:	BRICD5 (BRICD5 Products)

Target Details

Background: The function of this protein remains unknown.
Protein Interaction Partner: SYNE4,
Protein Size: 260

Molecular Weight: 28 kDa

Gene ID: 283870

UniProt: [Q6PL45](#)

Application Details

Restrictions: For Research Use only

Handling

Format: Liquid

Concentration: 1 mg/mL

Buffer: Liquid. Purified antibody supplied in 1x PBS buffer with 0.09 % (w/v) sodium azide and 2 % sucrose.

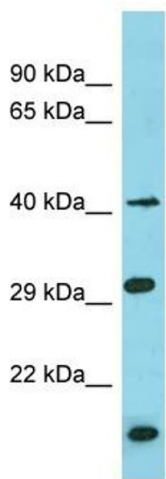
Preservative: Sodium azide

Precaution of Use: This product contains Sodium azide: a POISONOUS AND HAZARDOUS SUBSTANCE which should be handled by trained staff only.

Handling Advice: Avoid repeat freeze-thaw cycles.

Storage: -20 °C

Storage Comment: For short term use, store at 2-8°C up to 1 week. For long term storage, store at -20°C in small aliquots to prevent freeze-thaw cycles.



Host: Rabbit
Target Name: BRICD5
Sample Tissue: THP-1 Cell Lysate
Antibody Dilution: 1.0µg/ml

Western Blotting

Image 1. Host: Rabbit Target Name: BRICD5 Sample Type: THP-1 Whole Cell lysates Antibody Dilution: 1.0ug/ml