

Datasheet for ABIN2786396

**anti-Phospholipase C beta 1 antibody (C-Term)****2** Images[Go to Product page](#)

## Overview

Quantity:	100 µL
Target:	Phospholipase C beta 1 (PLCB1)
Binding Specificity:	C-Term
Reactivity:	Human, Rat, Mouse, Cow, Guinea Pig, Rabbit, Dog, Horse, Zebrafish (Danio rerio)
Host:	Rabbit
Clonality:	Polyclonal
Conjugate:	This Phospholipase C beta 1 antibody is un-conjugated
Application:	Western Blotting (WB)

## Product Details

Immunogen:	The immunogen is a synthetic peptide directed towards the C-terminal region of Mouse Plcb1
Sequence:	AALDAEMTQK LIDLKDKQQQ QLLNLRQEQY YSEKYQKREH IKLLIQKLTD
Predicted Reactivity:	Cow: 100%, Dog: 100%, Guinea Pig: 100%, Horse: 100%, Human: 100%, Mouse: 100%, Rabbit: 100%, Rat: 100%, Zebrafish: 86%
Characteristics:	This is a rabbit polyclonal antibody against Plcb1. It was validated on Western Blot.
Purification:	Affinity Purified

## Target Details

Target:	Phospholipase C beta 1 (PLCB1)
Alternative Name:	Plcb1 ( <a href="#">PLCB1 Products</a> )

## Target Details

Background:	<p>The production of the second messenger molecules diacylglycerol (DAG) and inositol 1,4,5-trisphosphate (IP3) is mediated by activated phosphatidylinositol-specific phospholipase C enzymes.</p> <p>Alias Symbols: 3110043I21Rik, AI132408, Plcb, mKIAA0581</p> <p>Protein Interaction Partner: Plcb1,</p> <p>Protein Size: 1216</p>
Molecular Weight:	133 kDa
Gene ID:	18795
NCBI Accession:	<a href="#">NM_001145830</a> , <a href="#">NP_001139302</a>
UniProt:	<a href="#">Q9Z1B3</a>
Pathways:	<a href="#">WNT Signaling</a> , <a href="#">AMPK Signaling</a> , <a href="#">Thyroid Hormone Synthesis</a> , <a href="#">Inositol Metabolic Process</a> , <a href="#">Regulation of Muscle Cell Differentiation</a> , <a href="#">Regulation of G-Protein Coupled Receptor Protein Signaling</a> , <a href="#">Proton Transport</a> , <a href="#">Skeletal Muscle Fiber Development</a> , <a href="#">CXCR4-mediated Signaling Events</a> , <a href="#">G-protein mediated Events</a>

## Application Details

Application Notes:	Optimal working dilutions should be determined experimentally by the investigator.
Comment:	Antigen size: 1216 AA
Restrictions:	For Research Use only

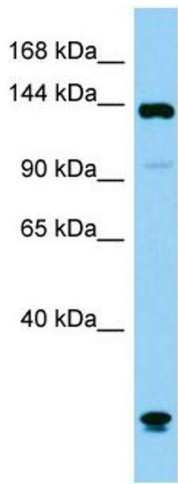
## Handling

Format:	Liquid
Concentration:	Lot specific
Buffer:	Liquid. Purified antibody supplied in 1x PBS buffer with 0.09 % (w/v) sodium azide and 2 % sucrose.
Preservative:	Sodium azide
Precaution of Use:	This product contains Sodium azide: a POISONOUS AND HAZARDOUS SUBSTANCE which should be handled by trained staff only.
Handling Advice:	Avoid repeated freeze-thaw cycles.
Storage:	-20 °C

Handling

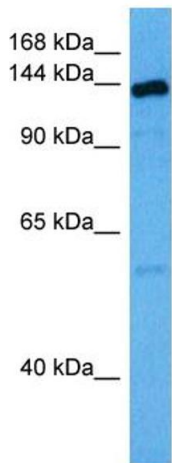
Storage Comment: For short term use, store at 2-8°C up to 1 week. For long term storage, store at -20°C in small aliquots to prevent freeze-thaw cycles.

Images



Western Blotting

**Image 1.** Host: Rabbit Target Name: Plcb1 Sample Type: Mouse Testis lysates Antibody Dilution: 1.0ug/ml



Host: Rabbit  
Target Name: Plcb1  
Sample Type: Mouse Testis Lysate  
Antibody Dilution: 1.0µg/ml

Western Blotting

**Image 2.** Host: Rabbit Target Name: PLCB1 Sample Tissue: Mouse Testis Antibody Dilution: 1ug/ml