

Datasheet for ABIN2786397

anti-Phospholipase C beta 1 antibody (Middle Region)**2** Images[Go to Product page](#)

Overview

Quantity:	100 µL
Target:	Phospholipase C beta 1 (PLCB1)
Binding Specificity:	Middle Region
Reactivity:	Human, Rat, Mouse, Cow, Guinea Pig, Rabbit, Dog, Horse
Host:	Rabbit
Clonality:	Polyclonal
Conjugate:	This Phospholipase C beta 1 antibody is un-conjugated
Application:	Western Blotting (WB)

Product Details

Immunogen:	The immunogen is a synthetic peptide directed towards the middle region of human PLCB1
Sequence:	EAQSKRQEKL VEKHKEIRQQ ILDEKPKGEG SSSFLSETCH EDPSVSPNFT
Predicted Reactivity:	Cow: 100%, Dog: 100%, Guinea Pig: 100%, Horse: 93%, Human: 100%, Mouse: 100%, Rabbit: 93%, Rat: 100%
Characteristics:	This is a rabbit polyclonal antibody against PLCB1. It was validated on Western Blot using a cell lysate as a positive control.
Purification:	Affinity Purified

Target Details

Target:	Phospholipase C beta 1 (PLCB1)
---------	--------------------------------

Target Details

Alternative Name:	PLCB1 (PLCB1 Products)
Background:	<p>The protein encoded by this gene catalyzes the formation of inositol 1,4,5-trisphosphate and diacylglycerol from phosphatidylinositol 4,5-bisphosphate. This reaction uses calcium as a cofactor and plays an important role in the intracellular transduction</p> <p>Alias Symbols: FLJ45792, PI-PLC, PLC-154, PLC-I, EIEE12, PLC154, PLCB1A, PLCB1B</p> <p>Protein Interaction Partner: TFCP2, CTBP2, CTBP1, CEP76, PLCB1, GNAQ, SLC9A3R1, GNA11, PCF11, UBC, KRIT1, SPTBN1, TRPC3, TRPM7, PARD6A, PARD3, RGS4, RGS12, MAPK3, PRKCD, PRKCA, MAPK1,</p> <p>Protein Size: 1173</p>
Molecular Weight:	134 kDa
Gene ID:	23236
NCBI Accession:	NM_182734 , NP_877398
UniProt:	D3DW13
Pathways:	WNT Signaling , AMPK Signaling , Thyroid Hormone Synthesis , Inositol Metabolic Process , Regulation of Muscle Cell Differentiation , Regulation of G-Protein Coupled Receptor Protein Signaling , Proton Transport , Skeletal Muscle Fiber Development , CXCR4-mediated Signaling Events , G-protein mediated Events

Application Details

Application Notes:	Optimal working dilutions should be determined experimentally by the investigator.
Comment:	Antigen size: 1173 AA
Restrictions:	For Research Use only

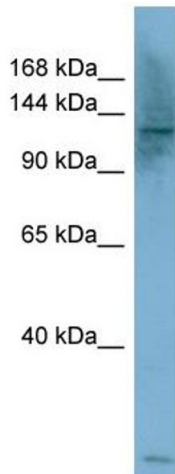
Handling

Format:	Liquid
Concentration:	Lot specific
Buffer:	Liquid. Purified antibody supplied in 1x PBS buffer with 0.09 % (w/v) sodium azide and 2 % sucrose.
Preservative:	Sodium azide
Precaution of Use:	This product contains Sodium azide: a POISONOUS AND HAZARDOUS SUBSTANCE which should be handled by trained staff only.

Handling

Handling Advice:	Avoid repeated freeze-thaw cycles.
Storage:	-20 °C
Storage Comment:	For short term use, store at 2-8°C up to 1 week. For long term storage, store at -20°C in small aliquots to prevent freeze-thaw cycles.

Images



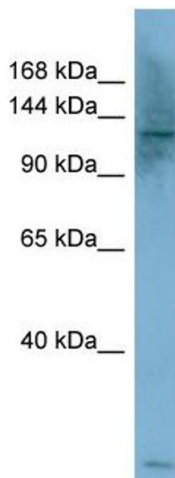
Western Blotting

Image 1. WB Suggested Anti-PLCB1 Antibody Titration:

0.2-1 ug/ml

ELISA Titer: 1:312500

Positive Control: HepG2 cell lysate



Western Blotting

Image 2. WB Suggested Anti-PLCB1

Antibody Titration: 0.2-1 µg/mL ELISA Titer: 1:12500

Positive Control: HepG2 cell lysate

There is BioGPS gene expression data showing that PLCB1 is expressed in HepG2