

Datasheet for ABIN2786400
anti-MAT2B antibody (N-Term)



[Go to Product page](#)

1 Image

Overview

| | |
|----------------------|--|
| Quantity: | 100 µL |
| Target: | MAT2B |
| Binding Specificity: | N-Term |
| Reactivity: | Human, Mouse, Rat, Cow, Dog, Rabbit, Guinea Pig, Horse |
| Host: | Rabbit |
| Clonality: | Polyclonal |
| Conjugate: | This MAT2B antibody is un-conjugated |
| Application: | Western Blotting (WB) |

Product Details

| | |
|-----------------------|---|
| Immunogen: | The immunogen is a synthetic peptide directed towards the N terminal region of human MAT2B |
| Sequence: | KEFQQNNWHA VGCGFRRARP KFEQVNLLDS NAVHHIIHDF QPHVIVHCAA |
| Predicted Reactivity: | Cow: 100%, Dog: 100%, Guinea Pig: 100%, Horse: 100%, Human: 100%, Mouse: 100%, Rabbit: 100%, Rat: 100% |
| Characteristics: | This is a rabbit polyclonal antibody against MAT2B. It was validated on Western Blot using a cell lysate as a positive control. |
| Purification: | Affinity Purified |

Target Details

| | |
|---------|-------|
| Target: | MAT2B |
|---------|-------|

Target Details

| | |
|-------------------|--|
| Alternative Name: | MAT2B (MAT2B Products) |
| Background: | <p>MAT2B belongs to the methionine adenosyltransferase (MAT) family. MAT catalyzes the biosynthesis of S-adenosylmethionine from methionine and ATP. This protein is the regulatory beta subunit of MAT. The protein encoded by this gene belongs to the methionine adenosyltransferase (MAT) family. MAT catalyzes the biosynthesis of S-adenosylmethionine from methionine and ATP. This protein is the regulatory beta subunit of MAT. Alternative splicing occurs at this locus and two transcript variants encoding distinct isoforms have been identified.</p> <p>Alias Symbols: MAT-II, MATIibeta, MGC12237, Nbla02999, TGR, SDR23E1</p> <p>Protein Interaction Partner: TRIM27, MAT2A, KPNA4, KPNA3, SUMO2, FERMT2, YWHAQ, ATG7, PDIA6, STK24, TUBA1A, EIF4H, UGDH, SNX1, PPP3CA, PPP1CA, PFAS, NASP, GLA, GAPDH, G6PD, EIF5, DFFA, CNN2, XPO5, CAPNS1, TUBB, P3H1, FBXO25, BAG3, UBC, TNS3, APP, ELAVL1,</p> <p>Protein Size: 323</p> |
| Molecular Weight: | 36 kDa |
| Gene ID: | 27430 |
| NCBI Accession: | NM_182796 , NP_877725 |
| UniProt: | A8K7A4 |
| Pathways: | Ribonucleoside Biosynthetic Process , Methionine Biosynthetic Process , SARS-CoV-2 Protein Interactome |

Application Details

| | |
|--------------------|--|
| Application Notes: | Optimal working dilutions should be determined experimentally by the investigator. |
| Comment: | Antigen size: 323 AA |
| Restrictions: | For Research Use only |

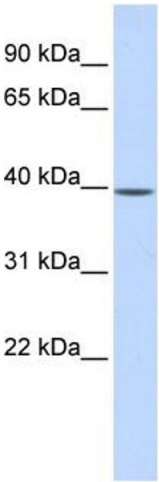
Handling

| | |
|----------------|---|
| Format: | Liquid |
| Concentration: | Lot specific |
| Buffer: | Liquid. Purified antibody supplied in 1x PBS buffer with 0.09 % (w/v) sodium azide and 2 % sucrose. |

Handling

| | |
|--------------------|---|
| Preservative: | Sodium azide |
| Precaution of Use: | This product contains Sodium azide: a POISONOUS AND HAZARDOUS SUBSTANCE which should be handled by trained staff only. |
| Handling Advice: | Avoid repeated freeze-thaw cycles. |
| Storage: | -20 °C |
| Storage Comment: | For short term use, store at 2-8°C up to 1 week. For long term storage, store at -20°C in small aliquots to prevent freeze-thaw cycles. |

Images



Western Blotting

Image 1. WB Suggested Anti-MAT2B Antibody Titration:
0.2-1 ug/ml
ELISA Titer: 1:312500
Positive Control: Human Liver