

Datasheet for ABIN2786401
anti-MAT2B antibody (Middle Region)



[Go to Product page](#)

1 Image

Overview

Quantity:	100 µL
Target:	MAT2B
Binding Specificity:	Middle Region
Reactivity:	Human, Mouse, Rat, Cow, Dog, Rabbit, Guinea Pig, Horse, Zebrafish (Danio rerio)
Host:	Rabbit
Clonality:	Polyclonal
Conjugate:	This MAT2B antibody is un-conjugated
Application:	Western Blotting (WB)

Product Details

Immunogen:	The immunogen is a synthetic peptide directed towards the middle region of human MAT2B
Sequence:	GNLAKEAAAV GAFLIYSSD YVFDGTNPPY REEDIPAPLN LYGKTKLDGE
Predicted Reactivity:	Cow: 100%, Dog: 100%, Guinea Pig: 100%, Horse: 100%, Human: 100%, Mouse: 93%, Rabbit: 100%, Rat: 100%, Zebrafish: 91%
Characteristics:	This is a rabbit polyclonal antibody against MAT2B. It was validated on Western Blot using a cell lysate as a positive control.
Purification:	Affinity Purified

Target Details

Target:	MAT2B
---------	-------

Target Details

Alternative Name:	MAT2B (MAT2B Products)
Background:	<p>MAT2B belongs to the methionine adenosyltransferase (MAT) family. MAT catalyzes the biosynthesis of S-adenosylmethionine from methionine and ATP. This protein is the regulatory beta subunit of MAT. The protein encoded by this gene belongs to the methionine adenosyltransferase (MAT) family. MAT catalyzes the biosynthesis of S-adenosylmethionine from methionine and ATP. This protein is the regulatory beta subunit of MAT. Alternative splicing occurs at this locus and two transcript variants encoding distinct isoforms have been identified.</p> <p>Alias Symbols: MAT-II, MATIibeta, MGC12237, Nbla02999, TGR, SDR23E1</p> <p>Protein Interaction Partner: TRIM27, MAT2A, KPNA4, KPNA3, SUMO2, FERMT2, YWHAQ, ATG7, PDIA6, STK24, TUBA1A, EIF4H, UGDH, SNX1, PPP3CA, PPP1CA, PFAS, NASP, GLA, GAPDH, G6PD, EIF5, DFFA, CNN2, XPO5, CAPNS1, TUBB, P3H1, FBXO25, BAG3, UBC, TNS3, APP, ELAVL1,</p> <p>Protein Size: 323</p>
Molecular Weight:	36 kDa
Gene ID:	27430
NCBI Accession:	NM_182796 , NP_877725
UniProt:	A8K7A4
Pathways:	Ribonucleoside Biosynthetic Process , Methionine Biosynthetic Process , SARS-CoV-2 Protein Interactome

Application Details

Application Notes:	Optimal working dilutions should be determined experimentally by the investigator.
Comment:	Antigen size: 323 AA
Restrictions:	For Research Use only

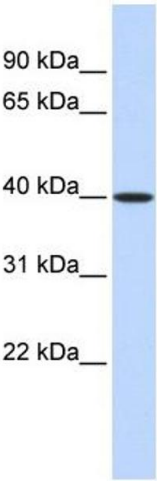
Handling

Format:	Liquid
Concentration:	Lot specific
Buffer:	Liquid. Purified antibody supplied in 1x PBS buffer with 0.09 % (w/v) sodium azide and 2 % sucrose.

Handling

Preservative:	Sodium azide
Precaution of Use:	This product contains Sodium azide: a POISONOUS AND HAZARDOUS SUBSTANCE which should be handled by trained staff only.
Handling Advice:	Avoid repeated freeze-thaw cycles.
Storage:	-20 °C
Storage Comment:	For short term use, store at 2-8°C up to 1 week. For long term storage, store at -20°C in small aliquots to prevent freeze-thaw cycles.

Images



Western Blotting

Image 1. WB Suggested Anti-MAT2B Antibody Titration:

0.2-1 ug/ml

ELISA Titer: 1:312500

Positive Control: Human Lung