

Datasheet for ABIN2786415  
**anti-FAM92B antibody (N-Term)**[Go to Product page](#)

## 1 Image

## Overview

Quantity:	100 µL
Target:	FAM92B
Binding Specificity:	N-Term
Reactivity:	Human, Mouse, Rat, Dog, Horse, Pig, Cow, Guinea Pig, Rabbit
Host:	Rabbit
Clonality:	Polyclonal
Conjugate:	This FAM92B antibody is un-conjugated
Application:	Western Blotting (WB)

## Product Details

Immunogen:	The immunogen is a synthetic peptide directed towards the N terminal region of human FAM92B
Sequence:	FAEDLAKVQD YRQAQVERLE TKVVNPLKLY GAQIKQTRAE IKKFKHVQNH
Predicted Reactivity:	Cow: 93%, Dog: 86%, Guinea Pig: 93%, Horse: 100%, Human: 100%, Mouse: 100%, Pig: 100%, Rabbit: 93%, Rat: 100%
Characteristics:	This is a rabbit polyclonal antibody against FAM92B. It was validated on Western Blot using a cell lysate as a positive control.
Purification:	Affinity Purified

## Target Details

Target:	FAM92B
---------	--------

## Target Details

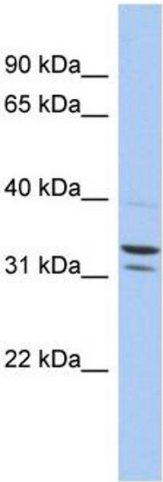
Alternative Name:	FAM92B ( <a href="#">FAM92B Products</a> )
Background:	The specific function of this protein remains unknown. Alias Symbols: FLJ44299, MGC138149 Protein Size: 304
Molecular Weight:	35 kDa
Gene ID:	339145
NCBI Accession:	<a href="#">NM_198491</a> , <a href="#">NP_940893</a>
UniProt:	<a href="#">Q6ZTR7</a>

## Application Details

Application Notes:	Optimal working dilutions should be determined experimentally by the investigator.
Comment:	Antigen size: 304 AA
Restrictions:	For Research Use only

## Handling

Format:	Liquid
Concentration:	Lot specific
Buffer:	Liquid. Purified antibody supplied in 1x PBS buffer with 0.09 % (w/v) sodium azide and 2 % sucrose.
Preservative:	Sodium azide
Precaution of Use:	This product contains Sodium azide: a POISONOUS AND HAZARDOUS SUBSTANCE which should be handled by trained staff only.
Handling Advice:	Avoid repeated freeze-thaw cycles.
Storage:	-20 °C
Storage Comment:	For short term use, store at 2-8°C up to 1 week. For long term storage, store at -20°C in small aliquots to prevent freeze-thaw cycles.



Western Blotting

**Image 1. WB Suggested Anti-FAM92B Antibody Titration:**

0.2-1 ug/ml

**ELISA Titer:** 1:312500

**Positive Control:** Hela cell lysate