



[Go to Product page](#)

Datasheet for ABIN2786416  
**anti-CLEC4G antibody (N-Term)**

1 Image

Overview

Quantity:	100 µL
Target:	CLEC4G
Binding Specificity:	N-Term
Reactivity:	Human, Horse
Host:	Rabbit
Clonality:	Polyclonal
Conjugate:	This CLEC4G antibody is un-conjugated
Application:	Western Blotting (WB)

Product Details

Immunogen:	The immunogen is a synthetic peptide directed towards the N terminal region of human CLEC4G
Sequence:	RTNASKQTAA LGALKEEVGD CHSCCSGTQA QLQTTTRAE LG EAQAKLMEQE
Predicted Reactivity:	Horse: 92%, Human: 100%
Characteristics:	This is a rabbit polyclonal antibody against CLEC4G. It was validated on Western Blot using a cell lysate as a positive control.
Purification:	Affinity Purified

Target Details

Target:	CLEC4G
---------	--------

## Target Details

---

Alternative Name:	CLEC4G ( <a href="#">CLEC4G Products</a> )
Background:	<p>The specific function of this protein remains unknown.</p> <p>Alias Symbols: LP2698, LSECTin, UNQ431, DTTR431</p> <p>Protein Interaction Partner: WBP2, EIF3I, NUP214, SHBG, PKLR, PRDX1, COX1, MAP3K11, RPSA, EIF6, IFI35, GEM, FTL, CPN1, CAPN1, AZU1, ASGR1, ARSA, APOH, APOA1, CLEC4G,</p> <p>Protein Size: 293</p>
Molecular Weight:	32 kDa
Gene ID:	339390
NCBI Accession:	<a href="#">NM_198492</a> , <a href="#">NP_940894</a>
UniProt:	<a href="#">Q6UXB4</a>

## Application Details

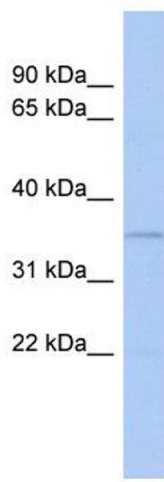
---

Application Notes:	Optimal working dilutions should be determined experimentally by the investigator.
Comment:	Antigen size: 293 AA
Restrictions:	For Research Use only

## Handling

---

Format:	Liquid
Concentration:	Lot specific
Buffer:	Liquid. Purified antibody supplied in 1x PBS buffer with 0.09 % (w/v) sodium azide and 2 % sucrose.
Preservative:	Sodium azide
Precaution of Use:	This product contains Sodium azide: a POISONOUS AND HAZARDOUS SUBSTANCE which should be handled by trained staff only.
Handling Advice:	Avoid repeated freeze-thaw cycles.
Storage:	-20 °C
Storage Comment:	For short term use, store at 2-8°C up to 1 week. For long term storage, store at -20°C in small aliquots to prevent freeze-thaw cycles.



### Western Blotting

#### Image 1. WB Suggested Anti-CLEC4G Antibody Titration:

0.2-1 ug/ml

**ELISA Titer:** 1:62500

**Positive Control:** Human Placenta