



[Go to Product page](#)

Datasheet for ABIN2786417  
**anti-LANCL3 antibody (C-Term)**

2 Images

Overview

Quantity:	100 µL
Target:	LANCL3
Binding Specificity:	C-Term
Reactivity:	Human, Mouse, Rabbit, Rat, Cow, Dog, Horse, Goat
Host:	Rabbit
Clonality:	Polyclonal
Conjugate:	This LANCL3 antibody is un-conjugated
Application:	Western Blotting (WB)

Product Details

Immunogen:	The immunogen is a synthetic peptide directed towards the C terminal region of human LANCL3
Sequence:	ICHGVAGSAY VFLLLYRLTG NSKYIYRAQS SFPVNLIKME HLLYTRQHCF
Predicted Reactivity:	Cow: 100%, Dog: 100%, Goat: 77%, Horse: 100%, Human: 100%, Mouse: 100%, Rabbit: 100%, Rat: 100%
Characteristics:	This is a rabbit polyclonal antibody against LANCL3. It was validated on Western Blot.
Purification:	Affinity Purified

Target Details

Target:	LANCL3
---------	--------

## Target Details

---

Alternative Name: LANCL3 ([LANCL3 Products](#))

Background: The function of LANCL3 remains unknown.  
Alias Symbols: FLJ42925  
Protein Size: 388

Molecular Weight: 43 kDa

Gene ID: 347404

NCBI Accession: [NM\\_198511](#), [NP\\_940913](#)

## Application Details

---

Application Notes: Optimal working dilutions should be determined experimentally by the investigator.

Comment: Antigen size: 388 AA

Restrictions: For Research Use only

## Handling

---

Format: Liquid

Concentration: Lot specific

Buffer: Liquid. Purified antibody supplied in 1x PBS buffer with 0.09 % (w/v) sodium azide and 2 % sucrose.

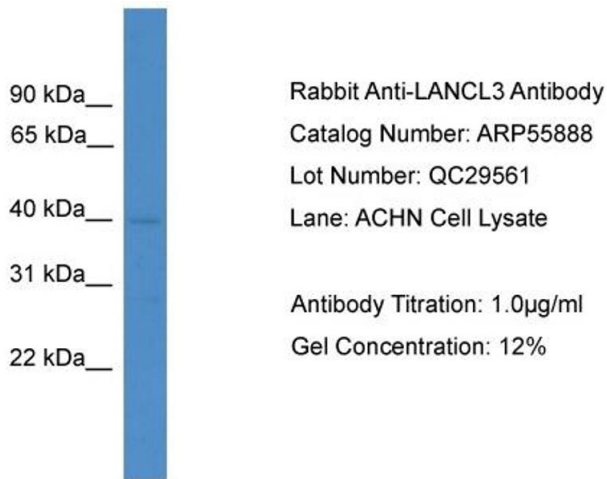
Preservative: Sodium azide

Precaution of Use: This product contains Sodium azide: a POISONOUS AND HAZARDOUS SUBSTANCE which should be handled by trained staff only.

Handling Advice: Avoid repeated freeze-thaw cycles.

Storage: -20 °C

Storage Comment: For short term use, store at 2-8°C up to 1 week. For long term storage, store at -20°C in small aliquots to prevent freeze-thaw cycles.



#### Western Blotting

##### Image 1. WB Suggested Anti-LANCL3

Antibody Titration: 0.2-1 µg/mL ELISA Titer: 1:12500

Positive Control: ACHN cell lysate



#### Western Blotting

##### Image 2. WB Suggested Anti-LANCL3 Antibody Titration:

0.2-1 ug/ml

**ELISA Titer:** 1:312500

**Positive Control:** ACHN cell lysate