



[Go to Product page](#)

Datasheet for ABIN2786419
anti-C10ORF96 antibody (Middle Region)

1 Image

Overview

Quantity:	100 µL
Target:	C10ORF96 (C10orf96)
Binding Specificity:	Middle Region
Reactivity:	Human, Guinea Pig, Rabbit, Pig, Cow, Horse, Dog, Saccharomyces cerevisiae
Host:	Rabbit
Clonality:	Polyclonal
Conjugate:	This C10ORF96 antibody is un-conjugated
Application:	Western Blotting (WB)

Product Details

Immunogen:	The immunogen is a synthetic peptide directed towards the middle region of human C10orf96
Sequence:	QANMLKSEMK SMEHDSSQLN ELQKQKSELI QELFTLQRKL KVFEEENES
Predicted Reactivity:	Cow: 79%, Dog: 86%, Guinea Pig: 86%, Horse: 85%, Human: 100%, Pig: 93%, Rabbit: 86%, Yeast: 85%
Characteristics:	This is a rabbit polyclonal antibody against C10orf96. It was validated on Western Blot using a cell lysate as a positive control.
Purification:	Affinity Purified

Target Details

Target:	C10ORF96 (C10orf96)
---------	---------------------

Target Details

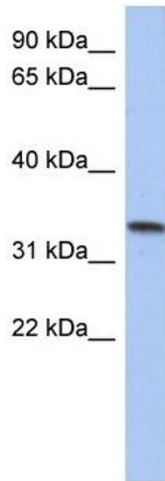
Alternative Name:	C10orf96 (C10orf96 Products)
Background:	The specific function of this protein remains unknown. Alias Symbols: MGC35062, C10orf96 Protein Interaction Partner: HDDC3, FAM13C, TCHP, SH2D4A, ISCU, DCTN2, TXNDC9, TEAD4, SMARCE1, KDM1A, Protein Size: 258
Molecular Weight:	31 kDa
Gene ID:	374355
NCBI Accession:	NM_198515 , NP_940917
UniProt:	P0C7W6

Application Details

Application Notes:	Optimal working dilutions should be determined experimentally by the investigator.
Comment:	Antigen size: 258 AA
Restrictions:	For Research Use only

Handling

Format:	Liquid
Concentration:	Lot specific
Buffer:	Liquid. Purified antibody supplied in 1x PBS buffer with 0.09 % (w/v) sodium azide and 2 % sucrose.
Preservative:	Sodium azide
Precaution of Use:	This product contains Sodium azide: a POISONOUS AND HAZARDOUS SUBSTANCE which should be handled by trained staff only.
Handling Advice:	Avoid repeated freeze-thaw cycles.
Storage:	-20 °C
Storage Comment:	For short term use, store at 2-8°C up to 1 week. For long term storage, store at -20°C in small aliquots to prevent freeze-thaw cycles.



Western Blotting

Image 1. WB Suggested Anti-C10orf96 Antibody

Titration: 0.2-1 ug/ml

ELISA Titer: 1:312500

Positive Control: Human Placenta