



[Go to Product page](#)

Datasheet for ABIN2786431
anti-TMEM110 antibody (N-Term)

2 Images

1 Publication

Overview

Quantity:	100 µL
Target:	TMEM110
Binding Specificity:	N-Term
Reactivity:	Human, Rat, Rabbit
Host:	Rabbit
Clonality:	Polyclonal
Conjugate:	This TMEM110 antibody is un-conjugated
Application:	Western Blotting (WB)

Product Details

Immunogen:	The immunogen is a synthetic peptide directed towards the N terminal region of human TMEM110
Sequence:	MQGPAGNASR GLPGGPPSTV ASGAGRCESE ALMHSGIFL QLLGVVAFS
Predicted Reactivity:	Human: 100%, Rabbit: 100%, Rat: 86%
Characteristics:	This is a rabbit polyclonal antibody against TMEM110. It was validated on Western Blot using a cell lysate as a positive control.
Purification:	Affinity Purified

Target Details

Target:	TMEM110
---------	---------

Target Details

Alternative Name: TMEM110 ([TMEM110 Products](#))

Background: The function of this protein remains unknown.
Alias Symbols: DKFZp667E1121, MGC52022
Protein Interaction Partner: UBC,
Protein Size: 294

Molecular Weight: 33 kDa

Gene ID: 375346

NCBI Accession: [NM_198563](#), [NP_940965](#)

UniProt: [Q86TL2](#)

Application Details

Application Notes: Optimal working dilutions should be determined experimentally by the investigator.

Comment: Antigen size: 294 AA

Restrictions: For Research Use only

Handling

Format: Liquid

Concentration: Lot specific

Buffer: Liquid. Purified antibody supplied in 1x PBS buffer with 0.09 % (w/v) sodium azide and 2 % sucrose.

Preservative: Sodium azide

Precaution of Use: This product contains Sodium azide: a POISONOUS AND HAZARDOUS SUBSTANCE which should be handled by trained staff only.

Handling Advice: Avoid repeated freeze-thaw cycles.

Storage: -20 °C

Storage Comment: For short term use, store at 2-8°C up to 1 week. For long term storage, store at -20°C in small aliquots to prevent freeze-thaw cycles.

Publications

Product cited in: Conti, Riva, Pesca, Iannaccone, Cannistraci, Corbo, Previtali, Quattrini, Alessio: "Increased

expression of Myosin binding protein H in the skeletal muscle of amyotrophic lateral sclerosis patients." in: **Biochimica et biophysica acta**, Vol. 1842, Issue 1, pp. 99-106, (2013) ([PubMed](#)).

Images



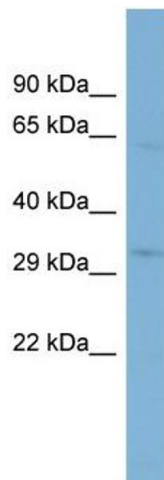
Western Blotting

Image 1. WB Suggested Anti-TMEM110 Antibody

Titration: 0.2-1 ug/ml

ELISA Titer: 1:312500

Positive Control: 721_B cell lysate



Western Blotting

Image 2. WB Suggested Anti-TMEM110

Antibody Titration: 0.2-1 µg/mL ELISA Titer: 1:12500

Positive Control: 21_B cell lysate

TMEM110 is supported by BioGPS gene expression data to be expressed in 721_B