



[Go to Product page](#)

Datasheet for ABIN2786441

anti-NAPEPLD antibody (N-Term)

1 Image

1 Publication

Overview

Quantity:	100 µL
Target:	NAPEPLD
Binding Specificity:	N-Term
Reactivity:	Human, Mouse, Rat, Cow, Rabbit, Guinea Pig, Horse, Dog
Host:	Rabbit
Clonality:	Polyclonal
Conjugate:	This NAPEPLD antibody is un-conjugated
Application:	Western Blotting (WB)

Product Details

Immunogen:	The immunogen is a synthetic peptide directed towards the N terminal region of human NAPE-PLD
Sequence:	TWKNPSIPNV LRWLIMEKDH SSVPSKEEL DKELPVLKPY FITNPEEAGV
Predicted Reactivity:	Cow: 100%, Dog: 93%, Guinea Pig: 100%, Horse: 100%, Human: 100%, Mouse: 100%, Rabbit: 100%, Rat: 100%
Characteristics:	This is a rabbit polyclonal antibody against NAPE-PLD. It was validated on Western Blot using a cell lysate as a positive control.
Purification:	Affinity Purified

Target Details

Target:	NAPEPLD
---------	---------

Target Details

Alternative Name:	NAPE-PLD (NAPEPLD Products)
Background:	<p>NAPE-PLD hydrolyzes N-acyl-phosphatidylethanolamines (NAPEs) to produce N-acylethanolamines (NAEs) and phosphatidic acid. NAPE-PLD is responsible for the generation of anandamide (N-arachidonylethanolamine), the ligand of cannabinoid and vanilloid receptors</p> <p>Alias Symbols: DKFZp781D1098, FMP30, NAPE-PLD</p> <p>Protein Interaction Partner: UBC, PPP1CC,</p> <p>Protein Size: 393</p>
Molecular Weight:	45 kDa
Gene ID:	222236
NCBI Accession:	NM_198990 , NP_945341
UniProt:	Q6IQ20

Application Details

Application Notes:	Optimal working dilutions should be determined experimentally by the investigator.
Comment:	Antigen size: 393 AA
Restrictions:	For Research Use only

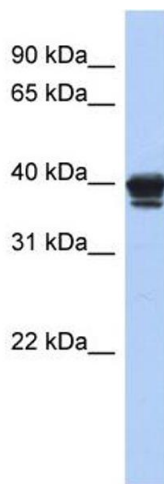
Handling

Format:	Liquid
Concentration:	Lot specific
Buffer:	Liquid. Purified antibody supplied in 1x PBS buffer with 0.09 % (w/v) sodium azide and 2 % sucrose.
Preservative:	Sodium azide
Precaution of Use:	This product contains Sodium azide: a POISONOUS AND HAZARDOUS SUBSTANCE which should be handled by trained staff only.
Handling Advice:	Avoid repeated freeze-thaw cycles.
Storage:	-20 °C
Storage Comment:	For short term use, store at 2-8°C up to 1 week. For long term storage, store at -20°C in small aliquots to prevent freeze-thaw cycles.

Publications

Product cited in: Gerhard, Wagner, Feingold, Shenmen, Grouse, Schuler, Klein, Old, Rasooly, Good, Guyer, Peck, Derge, Lipman, Collins, Jang, Sherry, Feolo, Misquitta, Lee, Rotmistrovsky, Greenhut, Schaefer, Buetow et al.: "The status, quality, and expansion of the NIH full-length cDNA project: the Mammalian Gene Collection (MGC). ..." in: **Genome research**, Vol. 14, Issue 10B, pp. 2121-7, (2004) ([PubMed](#)).

Images



Western Blotting

Image 1. WB Suggested Anti-NAPE-PLD Antibody

Titration: 0.2-1 ug/ml

ELISA Titer: 1:312500

Positive Control: 293T cell lysate