



[Go to Product page](#)

Datasheet for ABIN2786455

anti-CXorf67 antibody (Middle Region)

1 Image

Overview

Quantity:	100 µL
Target:	CXorf67
Binding Specificity:	Middle Region
Reactivity:	Dog, Human, Mouse
Host:	Rabbit
Clonality:	Polyclonal
Conjugate:	This CXorf67 antibody is un-conjugated
Application:	Western Blotting (WB)

Product Details

Immunogen:	The immunogen is a synthetic peptide directed towards the middle region of human LOC340602
Sequence:	SSYASNSSSP SRSPGLSPSS PSPEFLGLRS ISTPSPESLR YALMPEFYAL
Predicted Reactivity:	Dog: 91%, Human: 100%, Mouse: 83%
Characteristics:	This is a rabbit polyclonal antibody against LOC340602. It was validated on Western Blot using a cell lysate as a positive control.
Purification:	Affinity Purified

Target Details

Target:	CXorf67
---------	---------

Target Details

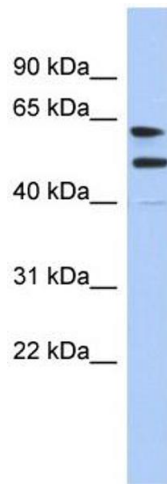
Alternative Name:	CXorf67 (CXorf67 Products)
Background:	The specific function of the protein remains unknown. Alias Symbols: MGC47837 Protein Interaction Partner: UBC, Protein Size: 503
Molecular Weight:	52 kDa
Gene ID:	340602
NCBI Accession:	NM_203407 , NP_981952
UniProt:	Q86X51

Application Details

Application Notes:	Optimal working dilutions should be determined experimentally by the investigator.
Comment:	Antigen size: 503 AA
Restrictions:	For Research Use only

Handling

Format:	Liquid
Concentration:	Lot specific
Buffer:	Liquid. Purified antibody supplied in 1x PBS buffer with 0.09 % (w/v) sodium azide and 2 % sucrose.
Preservative:	Sodium azide
Precaution of Use:	This product contains Sodium azide: a POISONOUS AND HAZARDOUS SUBSTANCE which should be handled by trained staff only.
Handling Advice:	Avoid repeated freeze-thaw cycles.
Storage:	-20 °C
Storage Comment:	For short term use, store at 2-8°C up to 1 week. For long term storage, store at -20°C in small aliquots to prevent freeze-thaw cycles.



Western Blotting

Image 1. WB Suggested Anti-CXorf67 Antibody Titration:

0.2-1 ug/ml

ELISA Titer: 1:1562500

Positive Control: Human Placenta