



[Go to Product page](#)

Datasheet for ABIN2786456

## anti-LRRN4CL antibody (Middle Region)

### 1 Image

#### Overview

Quantity:	100 µL
Target:	LRRN4CL
Binding Specificity:	Middle Region
Reactivity:	Human, Mouse, Guinea Pig, Horse, Rabbit, Rat, Cow, Dog
Host:	Rabbit
Clonality:	Polyclonal
Conjugate:	This LRRN4CL antibody is un-conjugated
Application:	Western Blotting (WB)

#### Product Details

Immunogen:	The immunogen is a synthetic peptide directed towards the middle region of human LOC221091
Sequence:	PFSPVLHYWL LLWDGSEAAQ KGPPLNATVR RAELKGLKPG GIYVVCVVA
Predicted Reactivity:	Cow: 92%, Dog: 79%, Guinea Pig: 77%, Horse: 93%, Human: 100%, Mouse: 100%, Rabbit: 93%, Rat: 93%
Characteristics:	This is a rabbit polyclonal antibody against LOC221091. It was validated on Western Blot using a cell lysate as a positive control.
Purification:	Affinity Purified

#### Target Details

Target:	LRRN4CL
---------	---------

## Target Details

---

Alternative Name: [LRRN4CL \(LRRN4CL Products\)](#)

Background: The function of this protein remains unknown.  
Alias Symbols: MGC61707  
Protein Interaction Partner: SRPK2,  
Protein Size: 238

Molecular Weight: 25 kDa

Gene ID: 221091

NCBI Accession: [NM\\_203422, NP\\_981967](#)

UniProt: [Q8ND94](#)

## Application Details

---

Application Notes: Optimal working dilutions should be determined experimentally by the investigator.

Comment: Antigen size: 238 AA

Restrictions: For Research Use only

## Handling

---

Format: Liquid

Concentration: Lot specific

Buffer: Liquid. Purified antibody supplied in 1x PBS buffer with 0.09 % (w/v) sodium azide and 2 % sucrose.

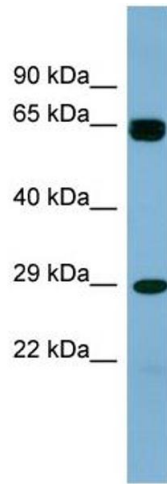
Preservative: Sodium azide

Precaution of Use: This product contains Sodium azide: a POISONOUS AND HAZARDOUS SUBSTANCE which should be handled by trained staff only.

Handling Advice: Avoid repeated freeze-thaw cycles.

Storage: -20 °C

Storage Comment: For short term use, store at 2-8°C up to 1 week. For long term storage, store at -20°C in small aliquots to prevent freeze-thaw cycles.



### Western Blotting

**Image 1. WB Suggested Anti-LRRN4CL Antibody**

**Titration:** 0.2-1 ug/ml

**ELISA Titer:** 1:312500

**Positive Control:** 721\_B cell lysate