

Datasheet for ABIN2786464  
**anti-SPINK6 antibody (Middle Region)**[Go to Product page](#)

## 2 Images

## Overview

Quantity:	100 µL
Target:	SPINK6
Binding Specificity:	Middle Region
Reactivity:	Human, Horse, Cow, Dog, Guinea Pig, Pig
Host:	Rabbit
Clonality:	Polyclonal
Conjugate:	This SPINK6 antibody is un-conjugated
Application:	Western Blotting (WB)

## Product Details

Immunogen:	The immunogen is a synthetic peptide directed towards the middle region of human SPINK6
Sequence:	GEFQDPKVYC TRESNPFCGS DGQTYGNKCA FCKAIVKSGG KISLKHPGKC
Predicted Reactivity:	Cow: 85%, Dog: 85%, Guinea Pig: 85%, Horse: 85%, Human: 100%, Pig: 93%
Characteristics:	This is a rabbit polyclonal antibody against SPINK6. It was validated on Western Blot.
Purification:	Affinity Purified

## Target Details

Target:	SPINK6
Alternative Name:	SPINK6 ( <a href="#">SPINK6 Products</a> )
Background:	The protein encoded by this gene is a Kazal-type serine protease inhibitor that acts on kallikrein-

## Target Details

related peptidases in the skin. Two transcript variants the same protein have been found for this gene.

Alias Symbols: BUSI2, MGC21394, UNQ844, SPINK6

Protein Interaction Partner: APP,

Protein Size: 80

Molecular Weight: 8 kDa

Gene ID: 404203

NCBI Accession: [NM\\_205841](#), [NP\\_995313](#)

UniProt: [Q6UWN8](#)

## Application Details

Application Notes: Optimal working dilutions should be determined experimentally by the investigator.

Comment: Antigen size: 80 AA

Restrictions: For Research Use only

## Handling

Format: Liquid

Concentration: Lot specific

Buffer: Liquid. Purified antibody supplied in 1x PBS buffer with 0.09 % (w/v) sodium azide and 2 % sucrose.

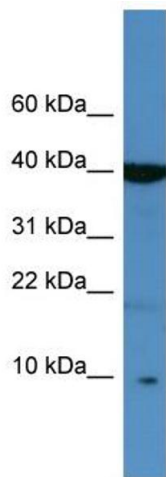
Preservative: Sodium azide

Precaution of Use: This product contains Sodium azide: a POISONOUS AND HAZARDOUS SUBSTANCE which should be handled by trained staff only.

Handling Advice: Avoid repeated freeze-thaw cycles.

Storage: -20 °C

Storage Comment: For short term use, store at 2-8°C up to 1 week. For long term storage, store at -20°C in small aliquots to prevent freeze-thaw cycles.

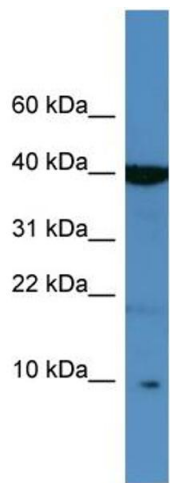


**Western Blotting**

**Image 1. WB Suggested Anti-SPINK6 Antibody Titration:**  
0.2-1 ug/ml

**ELISA Titer:** 1:312500

**Positive Control:** Jurkat cell lysate



Rabbit Anti-SPINK6 Antibody  
Catalog Number: ARP55978  
Lot Number: QC26904  
Lane: Jurkat Cell Lysate

Antibody Titration: 1.0µg/ml  
Gel Concentration: 10-20%

**Western Blotting**

**Image 2. WB Suggested Anti-SPINK6**  
Antibody Titration: 0.2-1 µg/mL ELISA Titer: 1::12500  
Positive Control: Jurkat cell lysate