



[Go to Product page](#)

Datasheet for ABIN2786466

anti-PRAME antibody (N-Term)

1 Image

1 Publication

Overview

Quantity:	100 µL
Target:	PRAME
Binding Specificity:	N-Term
Reactivity:	Human, Mouse, Rat, Cow, Horse, Rabbit
Host:	Rabbit
Clonality:	Polyclonal
Conjugate:	This PRAME antibody is un-conjugated
Application:	Western Blotting (WB)

Product Details

Immunogen:	The immunogen is a synthetic peptide directed towards the N terminal region of human PRAME
Sequence:	AMVQAWPFTC LPLGVLMKGQ HLHLETFKAV LDGLDVLLAQ EVRPRRWKLQ
Predicted Reactivity:	Cow: 92%, Horse: 79%, Human: 100%, Mouse: 92%, Rabbit: 79%, Rat: 92%
Characteristics:	This is a rabbit polyclonal antibody against PRAME. It was validated on Western Blot using a cell lysate as a positive control.
Purification:	Affinity Purified

Target Details

Target:	PRAME
---------	-------

Target Details

Alternative Name:	PRAME (PRAME Products)
Background:	<p>PRAME functions as a transcriptional repressor, inhibiting the signaling of retinoic acid through the retinoic acid receptors RARA, RARB and RARG. PRAME prevents retinoic acid-induced cell proliferation arrest, differentiation and apoptosis. This gene encodes an antigen that is predominantly expressed in human melanomas and that is recognized by cytolytic T lymphocytes. It is not expressed in normal tissues, except testis. This expression pattern is similar to that of other CT antigens, such as MAGE, BAGE and GAGE. However, unlike these other CT antigens, this gene is also expressed in acute leukemias. Five alternatively spliced transcript variants encoding the same protein have been observed for this gene.</p> <p>Alias Symbols: MAPE, OIP4, CT130</p> <p>Protein Interaction Partner: PRAME, RBX1, CUL2, TCEB2, TCEB1, ZNF408, FBXL12, XRN2, HIST4H4, HIST2H2BE, HIST2H2AC, HIST3H3, UBC, RARA, TP53RK, OSGEP, TPRKB, KDM1A, BAG2, LAGE3, UBL4A, SNRPB, RPS13, RPL22, RPL10, RFC4, PSMC4, HNRNPM, HNRNPH1, HNRNPF, HNRNPC, NEDD8, STK19,</p> <p>Protein Size: 509</p>
Molecular Weight:	56 kDa
Gene ID:	23532
NCBI Accession:	NM_006115 , NP_006106
UniProt:	P78395
Pathways:	Retinoic Acid Receptor Signaling Pathway , Nuclear Hormone Receptor Binding

Application Details

Application Notes:	Optimal working dilutions should be determined experimentally by the investigator.
Comment:	Antigen size: 509 AA
Restrictions:	For Research Use only

Handling

Format:	Liquid
Concentration:	Lot specific
Buffer:	Liquid. Purified antibody supplied in 1x PBS buffer with 0.09 % (w/v) sodium azide and 2 % sucrose.

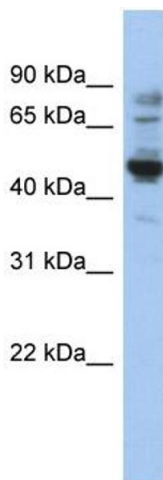
Handling

Preservative:	Sodium azide
Precaution of Use:	This product contains Sodium azide: a POISONOUS AND HAZARDOUS SUBSTANCE which should be handled by trained staff only.
Handling Advice:	Avoid repeated freeze-thaw cycles.
Storage:	-20 °C
Storage Comment:	For short term use, store at 2-8°C up to 1 week. For long term storage, store at -20°C in small aliquots to prevent freeze-thaw cycles.

Publications

Product cited in:	Schauer, Freund, Prenni, Curthoys: "Proteomic profiling and pathway analysis of the response of rat renal proximal convoluted tubules to metabolic acidosis." in: American journal of physiology. Renal physiology , Vol. 305, Issue 5, pp. F628-40, (2013) (PubMed).
	Freund, Prenni, Curthoys: "Response of the mitochondrial proteome of rat renal proximal convoluted tubules to chronic metabolic acidosis." in: American journal of physiology. Renal physiology , Vol. 304, Issue 2, pp. F145-55, (2013) (PubMed).

Images



Western Blotting

Image 1. WB Suggested Anti-PRAME Antibody Titration:

0.2-1 ug/ml

ELISA Titer: 1:1562500

Positive Control: HepG2 cell lysate