



[Go to Product page](#)

Datasheet for ABIN2786476
anti-GADL1 antibody (Middle Region)

2 Images

Overview

Quantity:	100 µL
Target:	GADL1
Binding Specificity:	Middle Region
Reactivity:	Human, Mouse, Rat, Cow, Dog, Guinea Pig, Horse, Rabbit, Zebrafish (Danio rerio)
Host:	Rabbit
Clonality:	Polyclonal
Conjugate:	This GADL1 antibody is un-conjugated
Application:	Western Blotting (WB)

Product Details

Immunogen:	The immunogen is a synthetic peptide directed towards the middle region of human GADL1
Sequence:	SAECHYSMKK AASFLGIGTE NVCFVETDGR GKMIPEELEK QVWQARKEGA
Predicted Reactivity:	Cow: 93%, Dog: 100%, Guinea Pig: 93%, Horse: 93%, Human: 100%, Mouse: 93%, Rabbit: 93%, Rat: 93%, Zebrafish: 86%
Characteristics:	This is a rabbit polyclonal antibody against GADL1. It was validated on Western Blot using a cell lysate as a positive control.
Purification:	Affinity Purified

Target Details

Target:	GADL1
---------	-------

Target Details

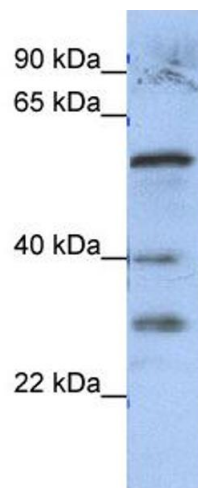
Alternative Name:	GADL1 (GADL1 Products)
Background:	The specific function of the protein remains unknown. Alias Symbols: MGC138191 Protein Size: 521
Molecular Weight:	59 kDa
Gene ID:	339896
NCBI Accession:	NM_207359 , NP_997242
UniProt:	Q6ZQY3

Application Details

Application Notes:	Optimal working dilutions should be determined experimentally by the investigator.
Comment:	Antigen size: 521 AA
Restrictions:	For Research Use only

Handling

Format:	Liquid
Concentration:	Lot specific
Buffer:	Liquid. Purified antibody supplied in 1x PBS buffer with 0.09 % (w/v) sodium azide and 2 % sucrose.
Preservative:	Sodium azide
Precaution of Use:	This product contains Sodium azide: a POISONOUS AND HAZARDOUS SUBSTANCE which should be handled by trained staff only.
Handling Advice:	Avoid repeated freeze-thaw cycles.
Storage:	-20 °C
Storage Comment:	For short term use, store at 2-8°C up to 1 week. For long term storage, store at -20°C in small aliquots to prevent freeze-thaw cycles.

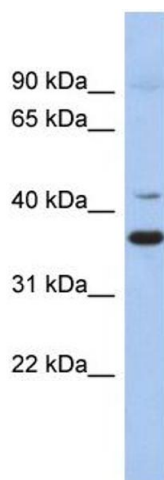


Western Blotting

Image 1. WB Suggested Anti-GADL1

Antibody Titration: 0.2-1 µg/mL

Positive Control: Human HEK293 cell lysate



Western Blotting

Image 2. WB Suggested Anti-GADL1 Antibody Titration:

0.2-1 ug/ml

ELISA Titer: 1:1562500

Positive Control: Human heart