

Datasheet for ABIN2786480

**anti-LRRC75B/FAM211B antibody (Middle Region)**[Go to Product page](#)**2** Images

## Overview

Quantity:	100 µL
Target:	LRRC75B/FAM211B (C22orf36)
Binding Specificity:	Middle Region
Reactivity:	Human, Rat
Host:	Rabbit
Clonality:	Polyclonal
Conjugate:	This LRRC75B/FAM211B antibody is un-conjugated
Application:	Western Blotting (WB)

## Product Details

Immunogen:	The immunogen is a synthetic peptide directed towards the middle region of human C22orf36
Sequence:	WKSSDKICRQ LIYHLTPHSK QQQGSSLRQR KTQSCLKSSL QKTLLAGETV
Predicted Reactivity:	Human: 100%, Rat: 100%
Characteristics:	This is a rabbit polyclonal antibody against C22orf36. It was validated on Western Blot.
Purification:	Affinity Purified

## Target Details

Target:	LRRC75B/FAM211B (C22orf36)
Alternative Name:	C22orf36 ( <a href="#">C22orf36 Products</a> )
Background:	The function of C22orf36 remains unknown.

## Target Details

---

Alias Symbols: MGC131773, C22orf36

Protein Size: 315

Molecular Weight: 35 kDa

Gene ID: 388886

NCBI Accession: [NM\\_207644](#), [NP\\_997527](#)

UniProt: [Q2VPJ9](#)

## Application Details

---

Application Notes: Optimal working dilutions should be determined experimentally by the investigator.

Comment: Antigen size: 315 AA

Restrictions: For Research Use only

## Handling

---

Format: Liquid

Concentration: Lot specific

Buffer: Liquid. Purified antibody supplied in 1x PBS buffer with 0.09 % (w/v) sodium azide and 2 % sucrose.

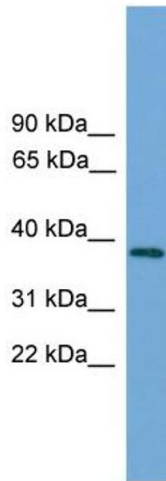
Preservative: Sodium azide

Precaution of Use: This product contains Sodium azide: a POISONOUS AND HAZARDOUS SUBSTANCE which should be handled by trained staff only.

Handling Advice: Avoid repeated freeze-thaw cycles.

Storage: -20 °C

Storage Comment: For short term use, store at 2-8°C up to 1 week. For long term storage, store at -20°C in small aliquots to prevent freeze-thaw cycles.



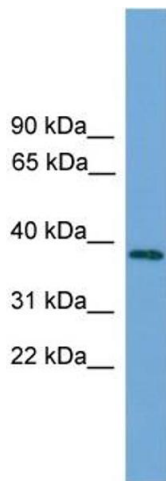
#### Western Blotting

##### Image 1. WB Suggested Anti-C22orf36 Antibody Titration:

0.2-1 ug/ml

**ELISA Titer:** 1:312500

**Positive Control:** 721\_B cell lysate



#### Western Blotting

##### Image 2. WB Suggested Anti-C22orf36

Antibody Titration: 0.2-1 µg/mL ELISA Titer: 1:12500

Positive Control: 21\_B cell lysate

FAM211B is supported by BioGPS gene expression data to be expressed in 721\_B