



[Go to Product page](#)

Datasheet for ABIN2786481

## anti-LYSMD1 antibody (N-Term)

### 1 Image

#### Overview

Quantity:	100 µL
Target:	LYSMD1
Binding Specificity:	N-Term
Reactivity:	Human, Mouse, Rat, Rabbit, Pig, Cow, Dog, Guinea Pig, Horse
Host:	Rabbit
Clonality:	Polyclonal
Conjugate:	This LYSMD1 antibody is un-conjugated
Application:	Western Blotting (WB)

#### Product Details

Immunogen:	The immunogen is a synthetic peptide directed towards the N terminal region of human LYSMD1
Sequence:	VRERRLEHQL EPGDTLAGLA LKYGVTMEQI KRANRLYTND SIFLKKTLVI
Predicted Reactivity:	Cow: 93%, Dog: 93%, Guinea Pig: 86%, Horse: 93%, Human: 100%, Mouse: 100%, Pig: 93%, Rabbit: 100%, Rat: 100%
Characteristics:	This is a rabbit polyclonal antibody against LYSMD1. It was validated on Western Blot using a cell lysate as a positive control.
Purification:	Affinity Purified

#### Target Details

Target:	LYSMD1
---------	--------

## Target Details

---

Alternative Name:	LYSMD1 ( <a href="#">LYSMD1 Products</a> )
Background:	The specific function of this protein remains unknown. Alias Symbols: MGC35223, RP11-68I18.5, SB145 Protein Interaction Partner: MTUS2, TCF12, GOLGA2, Protein Size: 227
Molecular Weight:	25 kDa
Gene ID:	388695
NCBI Accession:	<a href="#">NM_212551</a> , <a href="#">NP_997716</a>
UniProt:	<a href="#">Q96S90</a>

## Application Details

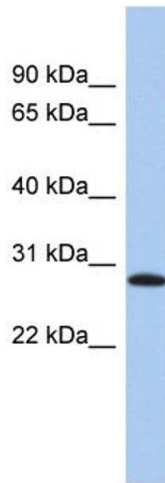
---

Application Notes:	Optimal working dilutions should be determined experimentally by the investigator.
Comment:	Antigen size: 227 AA
Restrictions:	For Research Use only

## Handling

---

Format:	Liquid
Concentration:	Lot specific
Buffer:	Liquid. Purified antibody supplied in 1x PBS buffer with 0.09 % (w/v) sodium azide and 2 % sucrose.
Preservative:	Sodium azide
Precaution of Use:	This product contains Sodium azide: a POISONOUS AND HAZARDOUS SUBSTANCE which should be handled by trained staff only.
Handling Advice:	Avoid repeated freeze-thaw cycles.
Storage:	-20 °C
Storage Comment:	For short term use, store at 2-8°C up to 1 week. For long term storage, store at -20°C in small aliquots to prevent freeze-thaw cycles.



### Western Blotting

#### Image 1. WB Suggested Anti-LYSMD1 Antibody Titration:

0.2-1 ug/ml

**ELISA Titer:** 1:312500

**Positive Control:** PANC1 cell lysate