



[Go to Product page](#)

Datasheet for ABIN2786485
anti-ARMC8 antibody (N-Term)

2 Images

Overview

Quantity:	100 µL
Target:	ARMC8
Binding Specificity:	N-Term
Reactivity:	Human, Mouse, Rat, Rabbit, Cow, Dog, Guinea Pig, Horse, Saccharomyces cerevisiae, Zebrafish (Danio rerio)
Host:	Rabbit
Clonality:	Polyclonal
Conjugate:	This ARMC8 antibody is un-conjugated
Application:	Western Blotting (WB)

Product Details

Immunogen:	The immunogen is a synthetic peptide directed towards the N terminal region of human ARMC8
Sequence:	MEVTASSRHY VDRLFDPPDQ KVLQGVIDMK NAVIGNNKQK ANLIVLGAVP
Predicted Reactivity:	Cow: 100%, Dog: 100%, Guinea Pig: 100%, Horse: 100%, Human: 100%, Mouse: 100%, Rabbit: 100%, Rat: 100%, Yeast: 82%, Zebrafish: 100%
Characteristics:	This is a rabbit polyclonal antibody against ARMC8. It was validated on Western Blot.
Purification:	Affinity Purified

Target Details

Target:	ARMC8
---------	-------

Target Details

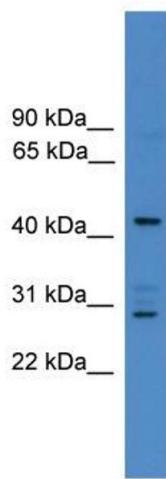
Alternative Name:	ARMC8 (ARMC8 Products)
Background:	The function of ARMC8 remains unknown. Alias Symbols: HSPC056, MGC10058, MGC4880, S863-2 Protein Interaction Partner: TCF12, UBC, EGFR, SOX2, NOTCH1, HGS, CUL3, CTNNB1, CTNNA1, TNNT1, RAE1, Protein Size: 385
Molecular Weight:	43 kDa
Gene ID:	25852
NCBI Accession:	NM_213654 , NP_998819
UniProt:	Q8IUR7

Application Details

Application Notes:	Optimal working dilutions should be determined experimentally by the investigator.
Comment:	Antigen size: 385 AA
Restrictions:	For Research Use only

Handling

Format:	Liquid
Concentration:	Lot specific
Buffer:	Liquid. Purified antibody supplied in 1x PBS buffer with 0.09 % (w/v) sodium azide and 2 % sucrose.
Preservative:	Sodium azide
Precaution of Use:	This product contains Sodium azide: a POISONOUS AND HAZARDOUS SUBSTANCE which should be handled by trained staff only.
Handling Advice:	Avoid repeated freeze-thaw cycles.
Storage:	-20 °C
Storage Comment:	For short term use, store at 2-8°C up to 1 week. For long term storage, store at -20°C in small aliquots to prevent freeze-thaw cycles.



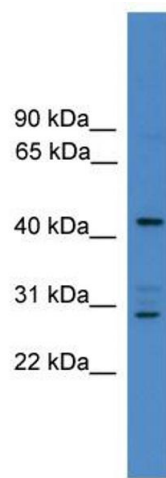
Western Blotting

Image 1. WB Suggested Anti-ARMC8 Antibody Titration:

0.2-1 ug/ml

ELISA Titer: 1:1562500

Positive Control: 721_B cell lysate



Western Blotting

Image 2. WB Suggested Anti-ARMC8

Antibody Titration: 0.2-1 µg/mL ELISA Titer: 1:1562500

Positive Control: 21_B cell lysate

ARMC8 is strongly supported by BioGPS gene expression data to be expressed in Human 721_B cells