



[Go to Product page](#)

Datasheet for ABIN2786488

## anti-RSPH10B antibody (Middle Region)

### 1 Image

#### Overview

Quantity:	100 µL
Target:	RSPH10B
Binding Specificity:	Middle Region
Reactivity:	Human, Mouse, Horse, Rat, Cow, Dog, Guinea Pig
Host:	Rabbit
Clonality:	Polyclonal
Conjugate:	This RSPH10B antibody is un-conjugated
Application:	Western Blotting (WB)

#### Product Details

Immunogen:	The immunogen is a synthetic peptide directed towards the middle region of human RSPH10B
Sequence:	EFVNGYRHGR GKFYYASGAM YDGEWVSNKK HGMGRLTFKN GRVYEGAFSN
Predicted Reactivity:	Cow: 93%, Dog: 93%, Guinea Pig: 93%, Horse: 100%, Human: 100%, Mouse: 86%, Rat: 91%
Characteristics:	This is a rabbit polyclonal antibody against RSPH10B. It was validated on Western Blot using a cell lysate as a positive control.
Purification:	Affinity Purified

#### Target Details

Target:	RSPH10B
Alternative Name:	RSPH10B ( <a href="#">RSPH10B Products</a> )

## Target Details

---

Background: The specific function of the protein remains unknown.  
Alias Symbols: MGC50833, RSPH10B2  
Protein Size: 870

---

Molecular Weight: 96 kDa

---

Gene ID: 222967

---

NCBI Accession: [NM\\_173565](#), [NP\\_775836](#)

---

UniProt: [B2RC85](#)

---

## Application Details

---

Application Notes: Optimal working dilutions should be determined experimentally by the investigator.

---

Comment: Antigen size: 870 AA

---

Restrictions: For Research Use only

---

## Handling

---

Format: Liquid

---

Concentration: Lot specific

---

Buffer: Liquid. Purified antibody supplied in 1x PBS buffer with 0.09 % (w/v) sodium azide and 2 % sucrose.

---

Preservative: Sodium azide

---

Precaution of Use: This product contains Sodium azide: a POISONOUS AND HAZARDOUS SUBSTANCE which should be handled by trained staff only.

---

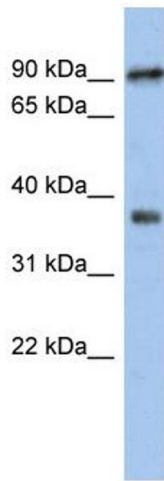
Handling Advice: Avoid repeated freeze-thaw cycles.

---

Storage: -20 °C

---

Storage Comment: For short term use, store at 2-8°C up to 1 week. For long term storage, store at -20°C in small aliquots to prevent freeze-thaw cycles.



### Western Blotting

**Image 1. WB Suggested Anti-RSPH10B Antibody**

**Titration:** 0.2-1 ug/ml

**ELISA Titer:** 1:1562500

**Positive Control:** Jurkat cell lysate