

Datasheet for ABIN2786493  
**anti-GL54D antibody (Middle Region)**[Go to Product page](#)

## 2 Images

## Overview

Quantity:	100 µL
Target:	GL54D (LOC152586)
Binding Specificity:	Middle Region
Reactivity:	Human, Cow, Dog, Mouse
Host:	Rabbit
Clonality:	Polyclonal
Conjugate:	This GL54D antibody is un-conjugated
Application:	Western Blotting (WB)

## Product Details

Immunogen:	The immunogen is a synthetic peptide directed towards the middle region of human LOC152586
Sequence:	KPIDWLLNDI FQVKVCDAGE DLRNCMKRKK QIRIQYKPSL FQHVGIHSSF
Predicted Reactivity:	Cow: 77%, Dog: 77%, Human: 100%, Mouse: 77%
Characteristics:	This is a rabbit polyclonal antibody against LOC152586. It was validated on Western Blot.
Purification:	Affinity Purified

## Target Details

Target:	GL54D (LOC152586)
Alternative Name:	LOC152586 ( <a href="#">LOC152586 Products</a> )

## Target Details

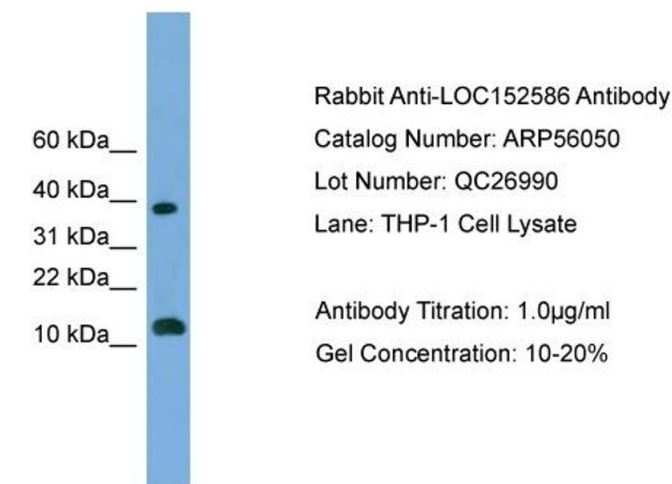
Background:	The function of this protein remains unknown. Alias Symbols: MGC43429 Protein Size: 166
Molecular Weight:	18 kDa
Gene ID:	152586
NCBI Accession:	<a href="#">XM_001720248</a> , <a href="#">XP_001720300</a>
UniProt:	<a href="#">D6RCD3</a>

## Application Details

Application Notes:	Optimal working dilutions should be determined experimentally by the investigator.
Comment:	Antigen size: 166 AA
Restrictions:	For Research Use only

## Handling

Format:	Liquid
Concentration:	Lot specific
Buffer:	Liquid. Purified antibody supplied in 1x PBS buffer with 0.09 % (w/v) sodium azide and 2 % sucrose.
Preservative:	Sodium azide
Precaution of Use:	This product contains Sodium azide: a POISONOUS AND HAZARDOUS SUBSTANCE which should be handled by trained staff only.
Handling Advice:	Avoid repeated freeze-thaw cycles.
Storage:	-20 °C
Storage Comment:	For short term use, store at 2-8°C up to 1 week. For long term storage, store at -20°C in small aliquots to prevent freeze-thaw cycles.

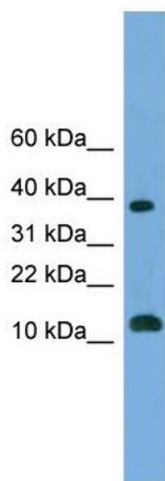


#### Western Blotting

**Image 1.** WB Suggested Anti-LOC152586

Antibody Titration: 0.2-1 µg/mL

Positive Control: THP-1 cell lysate



#### Western Blotting

**Image 2. WB Suggested Anti-LOC152586 Antibody**

**Titration:** 0.2-1 ug/ml

**Positive Control:** THP-1 cell lysate