

Datasheet for ABIN2786535
anti-RPS3A antibody (N-Term)[Go to Product page](#)

2 Images

Overview

Quantity:	100 µL
Target:	RPS3A
Binding Specificity:	N-Term
Reactivity:	Human, Mouse, Rat, Rabbit, Cow, Zebrafish (Danio rerio), Dog, Guinea Pig, Horse
Host:	Rabbit
Clonality:	Polyclonal
Conjugate:	This RPS3A antibody is un-conjugated
Application:	Western Blotting (WB)

Product Details

Immunogen:	The immunogen is a synthetic peptide directed towards the N terminal region of human RPS3A
Sequence:	APAMFNIRNI GKTLVTRTQG TKIASDGLKG RVFEVSLADL QNDEVAFRKF
Predicted Reactivity:	Cow: 100%, Dog: 100%, Guinea Pig: 100%, Horse: 100%, Human: 100%, Mouse: 100%, Rabbit: 100%, Rat: 100%, Zebrafish: 100%
Characteristics:	This is a rabbit polyclonal antibody against RPS3A. It was validated on Western Blot using a cell lysate as a positive control.
Purification:	Affinity Purified

Target Details

Target:	RPS3A
---------	-------

Target Details

Alternative Name: RPS3A ([RPS3A Products](#))

Background: RPS3A may play a role during erythropoiesis through regulation of transcription factor DDIT3. Ribosomes, the organelles that catalyze protein synthesis, consist of a small 40S subunit and a large 60S subunit. Together these subunits are composed of 4 RNA species and approximately 80 structurally distinct proteins. This gene encodes a ribosomal protein that is a component of the 40S subunit. The protein belongs to the S3AE family of ribosomal proteins. It is located in the cytoplasm. Disruption of the gene encoding rat ribosomal protein S3a, also named v-fos transformation effector protein, in v-fos-transformed rat cells results in reversion of the transformed phenotype. Transcript variants utilizing alternative transcription start sites have been described. This gene is co-transcribed with the U73A and U73B small nucleolar RNA genes, which are located in its fourth and third introns, respectively. As is typical for genes encoding ribosomal proteins, there are multiple processed pseudogenes of this gene dispersed through the genome. Publication Note: This RefSeq record includes a subset of the publications that are available for this gene. Please see the Entrez Gene record to access additional publications.

Alias Symbols: FTE1, MFTL, MGC23240, S3A

Protein Interaction Partner: HUWE1, UBC, TP53, VCP, TUBG1, AURKA, SUMO2, NEDD1, CEP76, TUBGCP4, CEP250, CEP57, RPA3, RPA2, RPA1, RPS17, RNF2, rev, RPS29, RPS28, RPS27, RPS26, RPS25, RPS24, RPS23, RPS21, RPS20, RPS19, RPS18, RPS16, RPS15A, RPS14, RPS13, RPS12, RPS10, RPS9, RPS8, RPS7,

Protein Size: 264

Molecular Weight: 30 kDa

Gene ID: 6189

NCBI Accession: [NM_001006](#), [NP_000997](#)

UniProt: [P61247](#)

Application Details

Application Notes: Optimal working dilutions should be determined experimentally by the investigator.

Comment: Antigen size: 264 AA

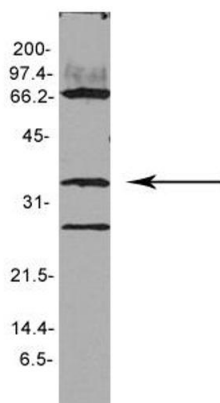
Restrictions: For Research Use only

Handling

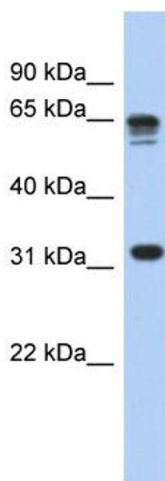
Format:	Liquid
Concentration:	Lot specific
Buffer:	Liquid. Purified antibody supplied in 1x PBS buffer with 0.09 % (w/v) sodium azide and 2 % sucrose.
Preservative:	Sodium azide
Precaution of Use:	This product contains Sodium azide: a POISONOUS AND HAZARDOUS SUBSTANCE which should be handled by trained staff only.
Handling Advice:	Avoid repeated freeze-thaw cycles.
Storage:	-20 °C
Storage Comment:	For short term use, store at 2-8°C up to 1 week. For long term storage, store at -20°C in small aliquots to prevent freeze-thaw cycles.

Images

RPS3A



See Immunoblot 2 Data and Customer Feedback tab for more information.



Western Blotting

Image 1. Sample Type: Arabidopsis thaliana extract (30ug)

Primary Diltution: 1:1000

Secondary Antibody: anti-rabbit HRP

Secondary Dilution: 1:15,000

Exposure Time: 1 minute

Image Submitted By: Anonymous

Western Blotting

Image 2. WB Suggested Anti-RPS3A Antibody Titration:

0.2-1 ug/ml

ELISA Titer: 1:1562500

Positive Control: Human Liver