



[Go to Product page](#)

Datasheet for ABIN2786544
anti-PPP2R2D antibody (C-Term)

1 Image

Overview

Quantity:	100 µL
Target:	PPP2R2D
Binding Specificity:	C-Term
Reactivity:	Human, Mouse, Rat, Guinea Pig, Horse, Cow, Dog, Rabbit, Zebrafish (Danio rerio)
Host:	Rabbit
Clonality:	Polyclonal
Conjugate:	This PPP2R2D antibody is un-conjugated
Application:	Western Blotting (WB)

Product Details

Immunogen:	The immunogen is a synthetic peptide corresponding to a region of Mouse
Sequence:	RRDVTLEASR ENSKPRASLK PRKVCTGGKR KKDEISVDSL DFNKKILHTA
Predicted Reactivity:	Cow: 93%, Dog: 93%, Guinea Pig: 93%, Horse: 93%, Human: 100%, Mouse: 93%, Rabbit: 93%, Rat: 93%, Zebrafish: 93%
Characteristics:	This is a rabbit polyclonal antibody against Ppp2r2d. It was validated on Western Blot.
Purification:	Affinity Purified

Target Details

Target:	PPP2R2D
Alternative Name:	Ppp2r2d (PPP2R2D Products)

Target Details

Background: Ppp2r2d is a B regulatory subunit of protein phosphatase 2A (PP2A) that plays a key role in cell cycle by controlling mitosis entry and exit. The activity of PP2A complexes containing PPP2R2D (PR55-delta) fluctuate during the cell cycle: the activity is high in interphase and low in mitosis. During mitosis, activity of PP2A is inhibited via interaction with phosphorylated ENSA and ARPP19 inhibitors. Within the PP2A complexes, the B regulatory subunits modulate substrate selectivity and catalytic activity, and also may direct the localization of the catalytic enzyme to a particular subcellular compartment.

Alias Symbols: 1300017E19Rik, D7Ert753e, MDS026

Protein Interaction Partner: Supt5, SMURF1, SMAD3, SMAD2,

Protein Size: 453

Molecular Weight: 50 kDa

Gene ID: 52432

NCBI Accession: [NM_026391](#), [NP_080667](#)

UniProt: [Q925E7](#)

Application Details

Application Notes: Optimal working dilutions should be determined experimentally by the investigator.

Comment: Antigen size: 453 AA

Restrictions: For Research Use only

Handling

Format: Liquid

Concentration: Lot specific

Buffer: Liquid. Purified antibody supplied in 1x PBS buffer with 0.09 % (w/v) sodium azide and 2 % sucrose.

Preservative: Sodium azide

Precaution of Use: This product contains Sodium azide: a POISONOUS AND HAZARDOUS SUBSTANCE which should be handled by trained staff only.

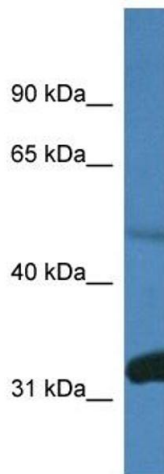
Handling Advice: Avoid repeated freeze-thaw cycles.

Storage: -20 °C

Handling

Storage Comment: For short term use, store at 2-8°C up to 1 week. For long term storage, store at -20°C in small aliquots to prevent freeze-thaw cycles.

Images



Western Blotting

Image 1. WB Suggested Anti-Ppp2r2d Antibody Titration:
1.0 ug/ml Positive Control: Mouse Brain