



[Go to Product page](#)

Datasheet for ABIN2786545
anti-PPP2R2A antibody (C-Term)

1 Image

Overview

Quantity:	100 µL
Target:	PPP2R2A
Binding Specificity:	C-Term
Reactivity:	Human, Mouse, Rat, Cow, Horse, Rabbit, Dog, Guinea Pig, Zebrafish (Danio rerio)
Host:	Rabbit
Clonality:	Polyclonal
Conjugate:	This PPP2R2A antibody is un-conjugated
Application:	Western Blotting (WB)

Product Details

Immunogen:	The immunogen is a synthetic peptide directed towards the C-terminal region of Rat Ppp2r2a
Sequence:	ASRENNKPRT VLKPRKVCAS GKRKKDEISV DSLDFNKKIL HTAWHPKENI
Predicted Reactivity:	Cow: 100%, Dog: 100%, Guinea Pig: 100%, Horse: 100%, Human: 100%, Mouse: 100%, Rabbit: 100%, Rat: 100%, Zebrafish: 100%
Characteristics:	This is a rabbit polyclonal antibody against Ppp2r2a. It was validated on Western Blot.
Purification:	Affinity Purified

Target Details

Target:	PPP2R2A
Alternative Name:	Ppp2r2a (PPP2R2A Products)

Target Details

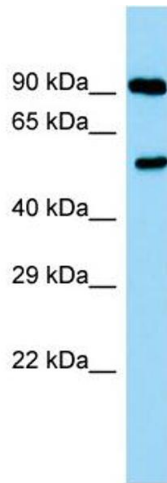
Background:	Human homolog forms a complex with cyclin G2 that may inhibit cell cycle progression. Alias Symbols: - Protein Size: 447
Molecular Weight:	49 kDa
Gene ID:	117104
NCBI Accession:	NM_053999 , NP_446451
UniProt:	P36876
Pathways:	Mitotic G1-G1/S Phases , Hepatitis C

Application Details

Application Notes:	Optimal working dilutions should be determined experimentally by the investigator.
Comment:	Antigen size: 447 AA
Restrictions:	For Research Use only

Handling

Format:	Liquid
Concentration:	Lot specific
Buffer:	Liquid. Purified antibody supplied in 1x PBS buffer with 0.09 % (w/v) sodium azide and 2 % sucrose.
Preservative:	Sodium azide
Precaution of Use:	This product contains Sodium azide: a POISONOUS AND HAZARDOUS SUBSTANCE which should be handled by trained staff only.
Handling Advice:	Avoid repeated freeze-thaw cycles.
Storage:	-20 °C
Storage Comment:	For short term use, store at 2-8°C up to 1 week. For long term storage, store at -20°C in small aliquots to prevent freeze-thaw cycles.



Western Blotting

Image 1. Host: Rabbit Target Name: Ppp2r2a Sample Type: Rat Testis lysates Antibody Dilution: 1.0ug/ml