

Datasheet for ABIN2786558
anti-GIMAP2 antibody (Middle Region)[Go to Product page](#)

1 Image

Overview

Quantity:	100 µL
Target:	GIMAP2
Binding Specificity:	Middle Region
Reactivity:	Human, Mouse, Pig, Rabbit, Rat, Cow, Zebrafish (Danio rerio), Dog, Guinea Pig, Horse
Host:	Rabbit
Clonality:	Polyclonal
Conjugate:	This GIMAP2 antibody is un-conjugated
Application:	Western Blotting (WB)

Product Details

Immunogen:	The immunogen is a synthetic peptide directed towards the middle region of Human GIMAP2
Sequence:	LVTQLGRYTS QDQQAQRVK EIFGEDAMGH TIVLFTHKED LNGGSLMDYM
Predicted Reactivity:	Cow: 93%, Dog: 86%, Guinea Pig: 79%, Horse: 93%, Human: 100%, Mouse: 91%, Pig: 86%, Rabbit: 91%, Rat: 85%, Zebrafish: 82%
Characteristics:	This is a rabbit polyclonal antibody against GIMAP2. It was validated on Western Blot.
Purification:	Affinity Purified

Target Details

Target:	GIMAP2
Alternative Name:	GIMAP2 (GIMAP2 Products)

Target Details

Background:	<p>This gene encodes a protein belonging to the GTP-binding superfamily and to the immunoglobulin-associated nucleotide (IAN) subfamily of nucleotide-binding proteins. In humans, the IAN subfamily genes are located in a cluster at 7q36.1.</p> <p>Alias Symbols: HIMAP2, IMAP2</p> <p>Protein Size: 337</p>
-------------	---

Molecular Weight:	37 kDa
-------------------	--------

Gene ID:	26157
----------	-------

NCBI Accession:	NM_015660 , NP_056475
-----------------	---

UniProt:	Q9UG22
----------	------------------------

Application Details

Restrictions:	For Research Use only
---------------	-----------------------

Handling

Format:	Liquid
---------	--------

Concentration:	1 mg/mL
----------------	---------

Buffer:	Liquid. Purified antibody supplied in 1x PBS buffer with 0.09 % (w/v) sodium azide and 2 % sucrose.
---------	---

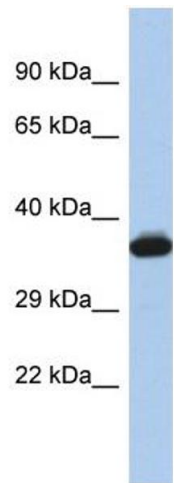
Preservative:	Sodium azide
---------------	--------------

Precaution of Use:	This product contains Sodium azide: a POISONOUS AND HAZARDOUS SUBSTANCE which should be handled by trained staff only.
--------------------	--

Handling Advice:	Avoid repeat freeze-thaw cycles.
------------------	----------------------------------

Storage:	-20 °C
----------	--------

Storage Comment:	For short term use, store at 2-8°C up to 1 week. For long term storage, store at -20°C in small aliquots to prevent freeze-thaw cycles.
------------------	---



Western Blotting

Image 1.