

Datasheet for ABIN2786559
anti-GIMAP6 antibody (C-Term)[Go to Product page](#)

2 Images

Overview

Quantity:	100 µL
Target:	GIMAP6
Binding Specificity:	C-Term
Reactivity:	Mouse, Human, Dog, Cow, Guinea Pig, Horse, Rabbit, Rat
Host:	Rabbit
Clonality:	Polyclonal
Conjugate:	This GIMAP6 antibody is un-conjugated
Application:	Western Blotting (WB)

Product Details

Immunogen:	The immunogen is a synthetic peptide directed towards the C terminal region of human GIMAP6
Sequence:	GVGVLGHTIL VFTRKEDLAG GSLEDYVRET NNQALAWLDV TLARRHCGFN
Predicted Reactivity:	Cow: 86%, Dog: 86%, Guinea Pig: 93%, Horse: 93%, Human: 100%, Mouse: 93%, Rabbit: 93%, Rat: 100%
Characteristics:	This is a rabbit polyclonal antibody against GIMAP6. It was validated on Western Blot.
Purification:	Affinity Purified

Target Details

Target:	GIMAP6
---------	--------

Target Details

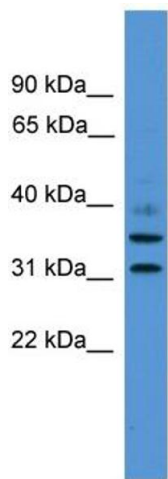
Alternative Name:	GIMAP6 (GIMAP6 Products)
Background:	<p>This gene encodes a protein belonging to the GTP-binding superfamily and to the immun-associated nucleotide (IAN) subfamily of nucleotide-binding proteins. In humans, IAN subfamily genes are located in a cluster at 7q36.1. Two transcript variants, one protein-coding and the other probably non-protein-coding, have been found for this gene.</p> <p>Alias Symbols: DKFZp686A01175, FLJ22690, IAN6, hIAN2, IAN2, IAN-2, IAN-6</p> <p>Protein Interaction Partner: GABARAPL2, APP,</p> <p>Protein Size: 292</p>
Molecular Weight:	32 kDa
Gene ID:	474344
NCBI Accession:	NM_024711 , NP_078987
UniProt:	Q6P9H5

Application Details

Application Notes:	Optimal working dilutions should be determined experimentally by the investigator.
Comment:	Antigen size: 292 AA
Restrictions:	For Research Use only

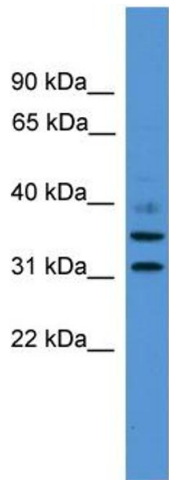
Handling

Format:	Liquid
Concentration:	Lot specific
Buffer:	Liquid. Purified antibody supplied in 1x PBS buffer with 0.09 % (w/v) sodium azide and 2 % sucrose.
Preservative:	Sodium azide
Precaution of Use:	This product contains Sodium azide: a POISONOUS AND HAZARDOUS SUBSTANCE which should be handled by trained staff only.
Handling Advice:	Avoid repeated freeze-thaw cycles.
Storage:	-20 °C
Storage Comment:	For short term use, store at 2-8°C up to 1 week. For long term storage, store at -20°C in small aliquots to prevent freeze-thaw cycles.



Western Blotting

Image 1. WB Suggested Anti-GIMAP6 Antibody Titration:
0.2-1 ug/ml
ELISA Titer: 1:312500
Positive Control: THP-1 cell lysate



Rabbit Anti-GIMAP6 Antibody
Catalog Number: ARP56178
Lot Number: QC29576
Lane: THP-1 Cell Lysate

Antibody Titration: 1.0µg/ml
Gel Concentration: 12%

Western Blotting

Image 2. WB Suggested Anti-GIMAP6
Antibody Titration: 0.2-1 µg/mL ELISA Titer: 1::12500
Positive Control: THP-1 cell lysate