

Datasheet for ABIN2786565
anti-LOC100362453 antibody (C-Term)



[Go to Product page](#)

1 Image

Overview

Quantity:	100 µL
Target:	LOC100362453
Binding Specificity:	C-Term
Reactivity:	Cow, Dog, Guinea Pig, Horse, Human, Mouse, Rabbit, Rat, Saccharomyces cerevisiae, Zebrafish (Danio rerio)
Host:	Rabbit
Clonality:	Polyclonal
Conjugate:	This LOC100362453 antibody is un-conjugated
Application:	Western Blotting (WB)

Product Details

Sequence:	EVPHEGPMCD LLWSDPDDRG GWGISPRGAG YTFGQDISET FNHANGLTLV
Predicted Reactivity:	Cow: 100%, Dog: 100%, Guinea Pig: 100%, Horse: 100%, Human: 100%, Mouse: 100%, Rabbit: 100%, Rat: 100%, Yeast: 100%, Zebrafish: 100%
Characteristics:	This is a rabbit polyclonal antibody against LOC100362453. It was validated on Western Blot.
Purification:	Affinity Purified

Target Details

Target:	LOC100362453
Alternative Name:	LOC100362453 (LOC100362453 Products)

Target Details

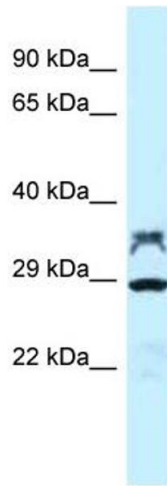
Background:	PP2A can modulate the activity of phosphorylase B kinase casein kinase 2, mitogen-stimulated S6 kinase, and MAP-2 kinase. Alias Symbols: - Protein Size: 309
Molecular Weight:	33 kDa
Gene ID:	100362453
NCBI Accession:	XM_002727924 , XP_002727970

Application Details

Application Notes:	Optimal working dilutions should be determined experimentally by the investigator.
Comment:	Antigen size: 309 AA
Restrictions:	For Research Use only

Handling

Format:	Liquid
Concentration:	Lot specific
Buffer:	Liquid. Purified antibody supplied in 1x PBS buffer with 0.09 % (w/v) sodium azide and 2 % sucrose.
Preservative:	Sodium azide
Precaution of Use:	This product contains Sodium azide: a POISONOUS AND HAZARDOUS SUBSTANCE which should be handled by trained staff only.
Handling Advice:	Avoid repeated freeze-thaw cycles.
Storage:	-20 °C
Storage Comment:	For short term use, store at 2-8°C up to 1 week. For long term storage, store at -20°C in small aliquots to prevent freeze-thaw cycles.



Western Blotting

Image 1. WB Suggested Anti-LOC100362453 Antibody

Titration: 1.0 ug/ml Positive Control: Rat Brain