

Datasheet for ABIN2786574

anti-RPS21 antibody (N-Term)[Go to Product page](#)**1** Image

Overview

Quantity:	100 µL
Target:	RPS21
Binding Specificity:	N-Term
Reactivity:	Human, Mouse, Rat, Cow, Guinea Pig, Zebrafish (Danio rerio), Dog, Rabbit, Saccharomyces cerevisiae
Host:	Rabbit
Clonality:	Polyclonal
Conjugate:	This RPS21 antibody is un-conjugated
Application:	Western Blotting (WB)

Product Details

Immunogen:	The immunogen is a synthetic peptide directed towards the N terminal region of human RPS21
Sequence:	MQNDAGEFVD LYVPRKCSAS NRIIGAKDHA SIQMNVAEVD KVTGRFNGQF
Predicted Reactivity:	Cow: 100%, Dog: 100%, Guinea Pig: 100%, Human: 100%, Mouse: 100%, Rabbit: 92%, Rat: 100%, Yeast: 86%, Zebrafish: 100%
Characteristics:	This is a rabbit polyclonal antibody against RPS21. It was validated on Western Blot using a cell lysate as a positive control.
Purification:	Affinity Purified

Target Details

Target:	RPS21
---------	-------

Target Details

Alternative Name:	RPS21 (RPS21 Products)
Background:	<p>The specific function of this protein remains unknown. Ribosomes, the organelles that catalyze protein synthesis, consist of a small 40S subunit and a large 60S subunit. Together these subunits are composed of 4 RNA species and approximately 80 structurally distinct proteins. This gene encodes a ribosomal protein that is a component of the 40S subunit. The protein belongs to the S21E family of ribosomal proteins. It is located in the cytoplasm. Alternative splice variants that encode different protein isoforms have been described, but their existence has not been verified. As is typical for genes encoding ribosomal proteins, there are multiple processed pseudogenes of this gene dispersed through the genome. Publication Note: This RefSeq record includes a subset of the publications that are available for this gene. Please see the Entrez Gene record to access additional publications.</p> <p>Alias Symbols: S21</p> <p>Protein Interaction Partner: ZUFSP, UBC, UCHL5, RPS27L, ADRM1, SYNCRIP, GNB2L1, DYNLL1, RPS28, RPS18, RPS16, RPS15A, RPS13, RPS10, RPS9, RPS8, RPS5, RPS4X, RPS3A, RPS3, RPS2, PSMD13, PSMD11, PSMD8, PSMD3, PSMD2, PSMD1, PSMC6, PSMC2, PSMC1, MTHFD1, RPSA, UBL4A, VCAM1, ITGA4, FN1, HNRN</p> <p>Protein Size: 83</p>
Molecular Weight:	9 kDa
Gene ID:	6227
NCBI Accession:	NM_001024 , NP_001015
UniProt:	P63220

Application Details

Application Notes:	Optimal working dilutions should be determined experimentally by the investigator.
Comment:	Antigen size: 83 AA
Restrictions:	For Research Use only

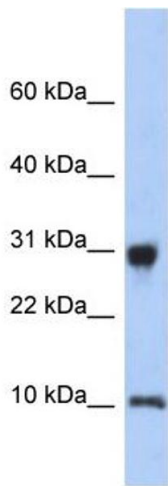
Handling

Format:	Liquid
Concentration:	Lot specific
Buffer:	Liquid. Purified antibody supplied in 1x PBS buffer with 0.09 % (w/v) sodium azide and 2 % sucrose.

Handling

Preservative:	Sodium azide
Precaution of Use:	This product contains Sodium azide: a POISONOUS AND HAZARDOUS SUBSTANCE which should be handled by trained staff only.
Handling Advice:	Avoid repeated freeze-thaw cycles.
Storage:	-20 °C
Storage Comment:	For short term use, store at 2-8°C up to 1 week. For long term storage, store at -20°C in small aliquots to prevent freeze-thaw cycles.

Images



Western Blotting

Image 1. WB Suggested Anti-RPS21 Antibody Titration:

0.2-1 ug/ml

ELISA Titer: 1:1562500

Positive Control: Human Placenta