

Datasheet for ABIN2786579
anti-GOPC antibody (Middle Region)



[Go to Product page](#)

1 Image

Overview

Quantity:	100 µL
Target:	GOPC
Binding Specificity:	Middle Region
Reactivity:	Human, Mouse, Rat, Cow, Dog, Rabbit, Guinea Pig, Horse
Host:	Rabbit
Clonality:	Polyclonal
Conjugate:	This GOPC antibody is un-conjugated
Application:	Western Blotting (WB)

Product Details

Immunogen:	The immunogen is a synthetic peptide directed towards the middle region of human GOPC
Sequence:	RNDLKRPMQA PPGHDQDSLK KSQGVGPIRK VLLLKEDHEG LGISITGGKE
Predicted Reactivity:	Cow: 100%, Dog: 93%, Guinea Pig: 100%, Horse: 100%, Human: 100%, Mouse: 100%, Rabbit: 100%, Rat: 100%
Characteristics:	This is a rabbit polyclonal antibody against GOPC. It was validated on Western Blot using a cell lysate as a positive control.
Purification:	Affinity Purified

Target Details

Target:	GOPC
---------	------

Target Details

Alternative Name:	GOPC (GOPC Products)
Background:	<p>GOPC plays a role in intracellular protein trafficking and degradation. GOPC may regulate CFTR chloride currents and acid-induced ACCN3 currents by modulating cell surface expression of both channels. GOPC may also regulate the intracellular trafficking of the ADR1B receptor. GOPC may play a role in autophagy. Overexpression of GOPC results in CFTR intracellular retention and degradation in the lysosomes. PIST is a PDZ domain-containing Golgi protein. PDZ domains contain approximately 90 amino acids and bind the extreme C terminus of proteins in a sequence-specific manner.[supplied by OMIM].</p> <p>Alias Symbols: CAL, FIG, GOPC1, PIST, dJ94G16.2</p> <p>Protein Interaction Partner: BATF, SSNA1, VTN, MYLK, HCK, FOXL2, DPYD, RPL13AP17, C17orf67, ZSCAN1, LCLAT1, FAM9B, ZBTB49, ZNF564, SPATA8, RNF183, MORN4, MYOCD, MUM1, ZNF587, SLC25A18, CCDC102B, AKIRIN1, MRPL1, SEMA4G, RNF220, FAM90A1, PID1, ZNF581, CERCAM, RHOQ, PARK7, STARD3, HSF1,</p> <p>Protein Size: 454</p>
Molecular Weight:	50 kDa
Gene ID:	57120
NCBI Accession:	NM_001017408 , NP_001017408
UniProt:	Q9HD26
Pathways:	Maintenance of Protein Location , Asymmetric Protein Localization

Application Details

Application Notes:	Optimal working dilutions should be determined experimentally by the investigator.
Comment:	Antigen size: 454 AA
Restrictions:	For Research Use only

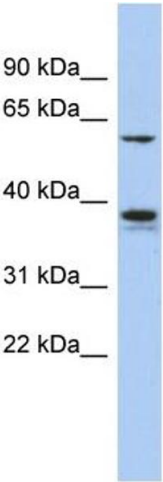
Handling

Format:	Liquid
Concentration:	Lot specific
Buffer:	Liquid. Purified antibody supplied in 1x PBS buffer with 0.09 % (w/v) sodium azide and 2 % sucrose.
Preservative:	Sodium azide

Handling

Precaution of Use:	This product contains Sodium azide: a POISONOUS AND HAZARDOUS SUBSTANCE which should be handled by trained staff only.
Handling Advice:	Avoid repeated freeze-thaw cycles.
Storage:	-20 °C
Storage Comment:	For short term use, store at 2-8°C up to 1 week. For long term storage, store at -20°C in small aliquots to prevent freeze-thaw cycles.

Images



Western Blotting

Image 1. WB Suggested Anti-GOPC Antibody Titration:

0.2-1 ug/ml

ELISA Titer: 1:62500

Positive Control: Hela cell lysate