

Datasheet for ABIN2786587
anti-RPS15A antibody (Middle Region)[Go to Product page](#)

1 Image

Overview

Quantity:	100 µL
Target:	RPS15A (RA)
Binding Specificity:	Middle Region
Reactivity:	Human, Mouse, Rat, Cow, Guinea Pig, Horse, Zebrafish (Danio rerio), Rabbit, Saccharomyces cerevisiae, Goat, Dog
Host:	Rabbit
Clonality:	Polyclonal
Conjugate:	This RPS15A antibody is un-conjugated
Application:	Western Blotting (WB)

Product Details

Immunogen:	The immunogen is a synthetic peptide directed towards the middle region of human RPS15A
Sequence:	KCGVISPRFD VQLKDLEKWQ NNLLPSRQFG FIVLTTSAGI MDHEEARRKH
Predicted Reactivity:	Cow: 100%, Dog: 100%, Goat: 93%, Guinea Pig: 100%, Horse: 100%, Human: 100%, Mouse: 100%, Rabbit: 100%, Rat: 100%, Yeast: 79%, Zebrafish: 100%
Characteristics:	This is a rabbit polyclonal antibody against RPS15A. It was validated on Western Blot using a cell lysate as a positive control.
Purification:	Affinity Purified

Target Details

Target:	RPS15A (RA)
---------	-------------

Target Details

Alternative Name:	RPS15A (RA Products)
Background:	<p>The specific function of this protein remains unknown. Ribosomes, the organelles that catalyze protein synthesis, consist of a small 40S subunit and a large 60S subunit. Together these subunits are composed of 4 RNA species and approximately 80 structurally distinct proteins. This gene encodes a ribosomal protein that is a component of the 40S subunit. The protein belongs to the S8P family of ribosomal proteins. It is located in the cytoplasm. As is typical for genes encoding ribosomal proteins, there are multiple processed pseudogenes of this gene dispersed through the genome.</p> <p>Alias Symbols: FLJ27457, MGC111208, S15a</p> <p>Protein Interaction Partner: HUWE1, CEP57, TUBG1, CEP76, CEP250, UBC, ZBTB1, RNF2, PSMD11, PSMD3, PSMD1, PSMC6, PSMC1, FAU, WIBG, WDR26, PNO1, TSR1, RPS27L, RPS29, RPS28, RPS27, RPS26, RPS25, RPS24, RPS23, RPS2, RPS21, RPS20, RPS19, RPS18, RPS16, RPS14, RPS13, RPS12, RPS10, RPS9, RPS</p> <p>Protein Size: 130</p>
Molecular Weight:	15 kDa
Gene ID:	6210
NCBI Accession:	NM_001030009 , NP_001025180
UniProt:	P62244

Application Details

Application Notes:	Optimal working dilutions should be determined experimentally by the investigator.
Comment:	Antigen size: 130 AA
Restrictions:	For Research Use only

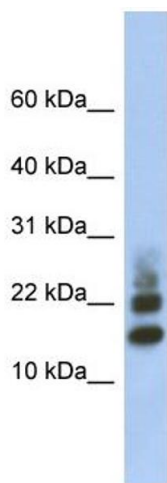
Handling

Format:	Liquid
Concentration:	Lot specific
Buffer:	Liquid. Purified antibody supplied in 1x PBS buffer with 0.09 % (w/v) sodium azide and 2 % sucrose.
Preservative:	Sodium azide
Precaution of Use:	This product contains Sodium azide: a POISONOUS AND HAZARDOUS SUBSTANCE which

Handling

	should be handled by trained staff only.
Handling Advice:	Avoid repeated freeze-thaw cycles.
Storage:	-20 °C
Storage Comment:	For short term use, store at 2-8°C up to 1 week. For long term storage, store at -20°C in small aliquots to prevent freeze-thaw cycles.

Images



Western Blotting

Image 1. WB Suggested Anti-RPS15A Antibody Titration:

0.2-1 ug/ml

ELISA Titer: 1:1562500

Positive Control: Human Muscle