

Datasheet for ABIN2786592
anti-FAIM antibody (Middle Region)[Go to Product page](#)

2 Images

Overview

Quantity:	100 µL
Target:	FAIM
Binding Specificity:	Middle Region
Reactivity:	Human, Mouse, Rat, Zebrafish (Danio rerio), Dog, Cow, Horse, Rabbit, Guinea Pig
Host:	Rabbit
Clonality:	Polyclonal
Application:	Western Blotting (WB)

Product Details

Immunogen:	The immunogen is a synthetic peptide directed towards the middle region of human FAIM
Sequence:	FRIVLEKDAM DVWCNGKKLE TAGEFVDDGT ETHFSIGNHD CYIKAVSSGK
Predicted Reactivity:	Cow: 100%, Dog: 93%, Guinea Pig: 100%, Horse: 100%, Human: 100%, Mouse: 100%, Rabbit: 100%, Rat: 100%, Zebrafish: 93%
Characteristics:	This is a rabbit polyclonal antibody against FAIM. It was validated on Western Blot using a cell lysate as a positive control.
Purification:	Affinity Purified

Target Details

Target:	FAIM
Alternative Name:	FAIM (FAIM Products)

Target Details

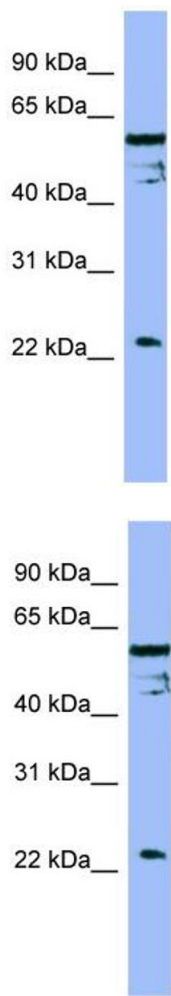
Background:	FAIM plays a role as an inducible effector molecule that mediates Fas resistance produced by surface Ig engagement in B cells. Alias Symbols: FAIM1 Protein Interaction Partner: SPRY2, UBC, XIAP, Protein Size: 213
Molecular Weight:	24 kDa
Gene ID:	55179
NCBI Accession:	NM_001033030 , NP_001028202
UniProt:	Q9NVQ4

Application Details

Application Notes:	Optimal working dilutions should be determined experimentally by the investigator.
Comment:	Antigen size: 213 AA
Restrictions:	For Research Use only

Handling

Format:	Liquid
Concentration:	Lot specific
Buffer:	Liquid. Purified antibody supplied in 1x PBS buffer with 0.09 % (w/v) sodium azide and 2 % sucrose.
Preservative:	Sodium azide
Precaution of Use:	This product contains Sodium azide: a POISONOUS AND HAZARDOUS SUBSTANCE which should be handled by trained staff only.
Handling Advice:	Avoid repeated freeze-thaw cycles.
Storage:	-20 °C
Storage Comment:	For short term use, store at 2-8°C up to 1 week. For long term storage, store at -20°C in small aliquots to prevent freeze-thaw cycles.



Western Blotting

Image 1. WB Suggested Anti-FAIM Antibody Titration: 0.2-1 ug/ml

ELISA Titer: 1:312500

Positive Control: OVCAR-3 cell lysate

Western Blotting

Image 2. WB Suggested Anti-FAIM

Antibody Titration: 0.2-1 µg/mL ELISA Titer: 1:12500

Positive Control: OVCAR-3 cell lysate

FAIM is supported by BioGPS gene expression data to be expressed in OVCAR3