

Datasheet for ABIN2786598  
**anti-AMZ2 antibody (C-Term)**[Go to Product page](#)

## 2 Images

## Overview

Quantity:	100 µL
Target:	AMZ2
Binding Specificity:	C-Term
Reactivity:	Human, Rat, Mouse, Cow, Dog, Guinea Pig, Horse, Rabbit
Host:	Rabbit
Clonality:	Polyclonal
Conjugate:	This AMZ2 antibody is un-conjugated
Application:	Western Blotting (WB)

## Product Details

Immunogen:	The immunogen is a synthetic peptide directed towards the C terminal region of human AMZ2
Sequence:	ACLMQGSNHL EEADRRPLNL CPICLHKLQC AVGFSSIVERY KALVRWIDDE
Predicted Reactivity:	Cow: 100%, Dog: 100%, Guinea Pig: 100%, Horse: 100%, Human: 100%, Mouse: 93%, Rabbit: 100%, Rat: 100%
Characteristics:	This is a rabbit polyclonal antibody against AMZ2. It was validated on Western Blot.
Purification:	Affinity Purified

## Target Details

Target:	AMZ2
Alternative Name:	AMZ2 ( <a href="#">AMZ2 Products</a> )

## Target Details

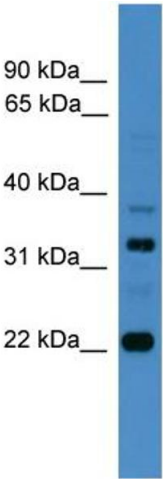
Background:	The function of AMZ2 remains unknown. Alias Symbols: - Protein Interaction Partner: UBC, Protein Size: 302
Molecular Weight:	33 kDa
Gene ID:	51321
NCBI Accession:	<a href="#">NM_001033574</a> , <a href="#">NP_001028746</a>
UniProt:	<a href="#">A6NLD9</a>

## Application Details

Application Notes:	Optimal working dilutions should be determined experimentally by the investigator.
Comment:	Antigen size: 302 AA
Restrictions:	For Research Use only

## Handling

Format:	Liquid
Concentration:	Lot specific
Buffer:	Liquid. Purified antibody supplied in 1x PBS buffer with 0.09 % (w/v) sodium azide and 2 % sucrose.
Preservative:	Sodium azide
Precaution of Use:	This product contains Sodium azide: a POISONOUS AND HAZARDOUS SUBSTANCE which should be handled by trained staff only.
Handling Advice:	Avoid repeated freeze-thaw cycles.
Storage:	-20 °C
Storage Comment:	For short term use, store at 2-8°C up to 1 week. For long term storage, store at -20°C in small aliquots to prevent freeze-thaw cycles.



Rabbit Anti-AMZ2 Antibody  
Catalog Number: ARP56248  
Lot Number: QC29580  
Lane: RPMI-8226 Cell Lysate

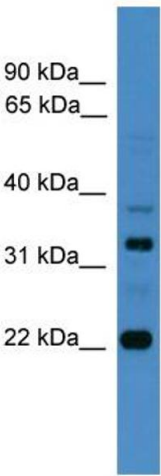
Antibody Titration: 1.0µg/ml  
Gel Concentration: 12%

Western Blotting

**Image 1.** WB Suggested Anti-AMZ2

Antibody Titration: 0.2-1 µg/mL ELISA Titer: 1::12500

Positive Control: RPMI 8226 cell lysate



Western Blotting

**Image 2. WB Suggested Anti-AMZ2 Antibody Titration:**

0.2-1 ug/ml

**ELISA Titer:** 1:312500

**Positive Control:** RPMI 8226 cell lysate